

Canary Gold is advancing a district-scale land package in Brazil's Madeira River region, where early shallow drilling has confirmed gold within an interpreted paleochannel system now being tested by RC drilling.

Flagship Rio Madeira Gold Project Madeira River Basin, Rondônia, Brazil

Exploration Area

163,145 ha accessible by highway, powerline, and river.

25 km Air-core & Auger Program

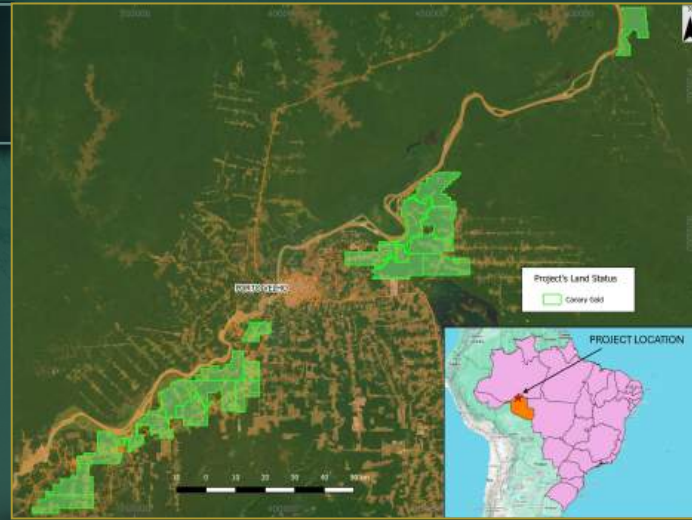
Testing ~89 km of prospective strike.

63 Auger Holes Completed Totaling 1,289 Metres

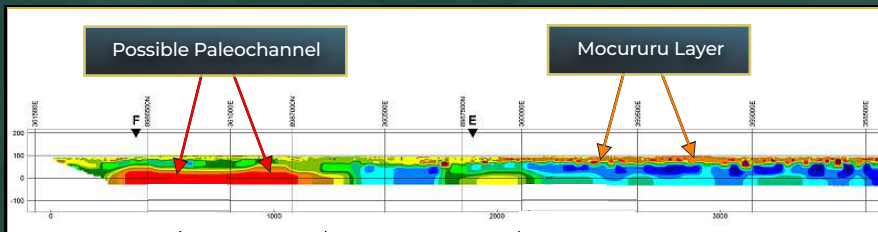
Targeting gold-bearing paleochannels.

First 33 Holes Assayed

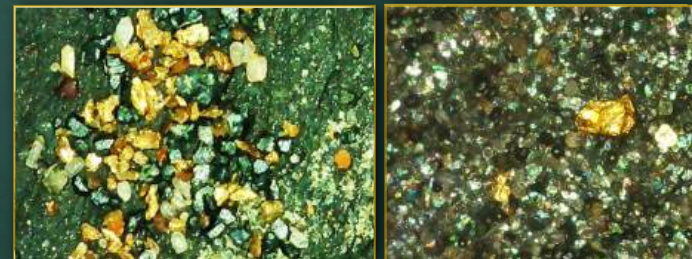
6 returned anomalous gold (10-109 ppb Au).



One of the largest contiguous land positions within Brazil's Madeira River Region.



Multiple paleochannel corridors have been identified across Canary's ~163,000 ha district-scale land package.



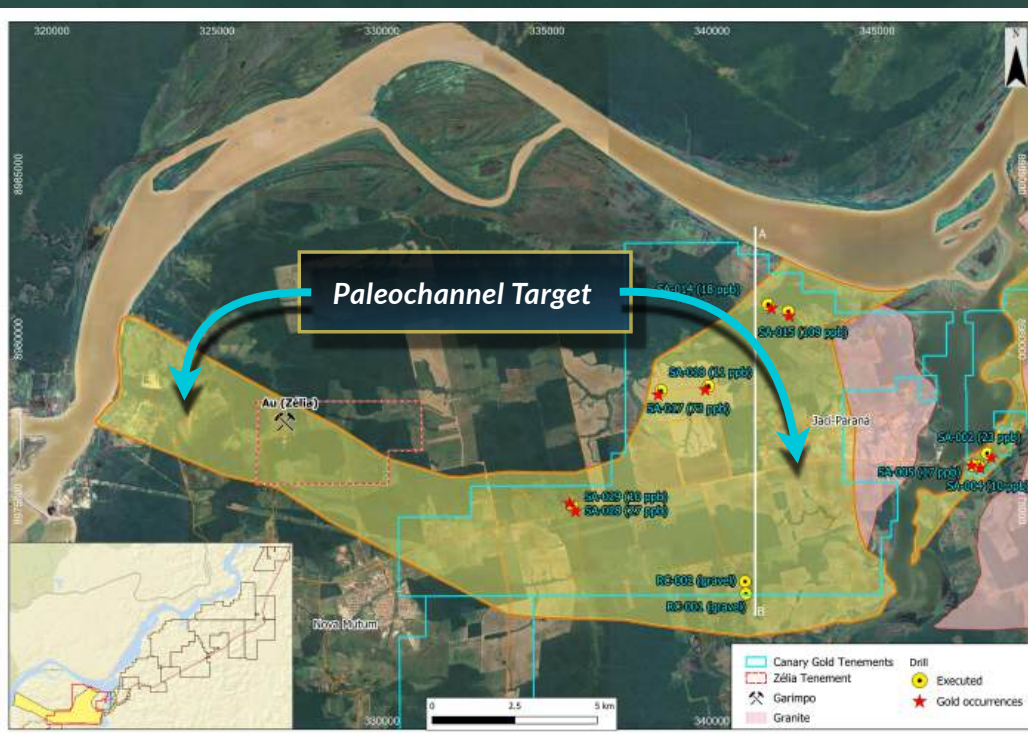
Visible gold observed during field sampling supports the geological interpretation but is not indicative of grade or economic mineralization.

Paleochannel Focus

- Broad interpreted paleochannel corridor east of the Madeira River
- Initial shallow drilling confirmed gold within the system
- RC drilling now testing deeper mature sand and gravel horizons

Mark Tommasi
President
Canary Gold Corp.

+1 (604) 318 - 1448
info@canarygold.ca
www.canarygold.ca



Exploration targets shown are interpretive and subject to drilling and assay verification. Early-stage results are isolated and discontinuous and are not currently indicative of continuous mineralization or economic concentrations. Historical regional production has not been verified by Canary and is not necessarily indicative of mineralization on the company's property.