

# CANARY GOLD

CSE: BRAZ



Unlocking a New Gold Horizon in Brazil's Madeira Basin

— DISTRICT-SCALE PALEOCHANNEL DISCOVERY ADJACENT TO A 7-MILLION-OUNCE-PRODUCING RIVER SYSTEM —





## Forward-Looking Statements and NI 43-101 Disclosure

### Forward Looking Statements:

This presentation includes certain statements that may be deemed forward-looking statements within the meaning of applicable securities laws. Forward-looking statements are often identified by terms such as “will,” “may,” “should,” “anticipates,” “expects,” “believes,” and similar expressions, or the negative of such terms. All statements in this presentation, other than statements of historical fact, that address future production, reserve potential, exploration activities, results, events, or developments that the Company expects are forward-looking statements.

Such forward-looking statements include, without limitation: (i) statements concerning the location, size, and character of mineralization; (ii) statements regarding the Company’s planned exploration programs; (iii) expectations regarding the Company’s business plans; (iv) the potential for paleochannels to host a large-scale gold exploration target; and (v) statements regarding future exploration results. Although the Company believes the expectations expressed in such forward-looking statements are based on reasonable assumptions, such statements are not guarantees of future performance, and actual results or developments may differ materially.

Factors that could cause actual results to differ materially include, among others, market prices, exploration and development success, availability of capital and financing, and general economic, market, or business conditions, as well as those factors described in the Company’s Prospectus dated September 23, 2024, available on SEDAR+ at [www.sedarplus.ca](http://www.sedarplus.ca). Readers are cautioned not to place undue reliance on forward-looking information. The Company expressly disclaims any obligation to update or revise forward-looking statements, except as required by law.

### Illustrative and Conceptual Information:

Certain maps, diagrams, photographs, geophysical images, and geological models included in this presentation are conceptual or illustrative in nature and are intended solely to convey exploration concepts and target rationale. Such information does not represent defined mineralization, does not constitute evidence of a mineral resource or reserve, and should not be interpreted as implying economic viability or discovery.

### Securities Laws:

The Company’s securities have not been and will not be registered under the United States Securities Act of 1933, as amended (the “U.S. Securities Act”), or any state securities laws. Accordingly, such securities may not be offered or sold within the United States unless registered under the U.S. Securities Act and applicable state securities laws, or pursuant to exemptions therefrom. This presentation does not constitute an offer to sell or a solicitation of an offer to buy any securities of the Company in any jurisdiction where such offer, solicitation, or sale would be unlawful.

This presentation is not, and under no circumstances is to be construed as, a prospectus, advertisement, or public offering of securities in any province, territory, or jurisdiction. No securities regulatory authority in Canada, the United States, or any other jurisdiction has reviewed or passed upon this presentation or the merits of any securities, and any representation to the contrary is an offence.

Andrew Lee Smith, CEO, Executive Chair & Director of Canary Gold Corp., and a “Qualified Person” as defined in NI 43-101, has reviewed and approved the technical disclosure contained in this presentation.

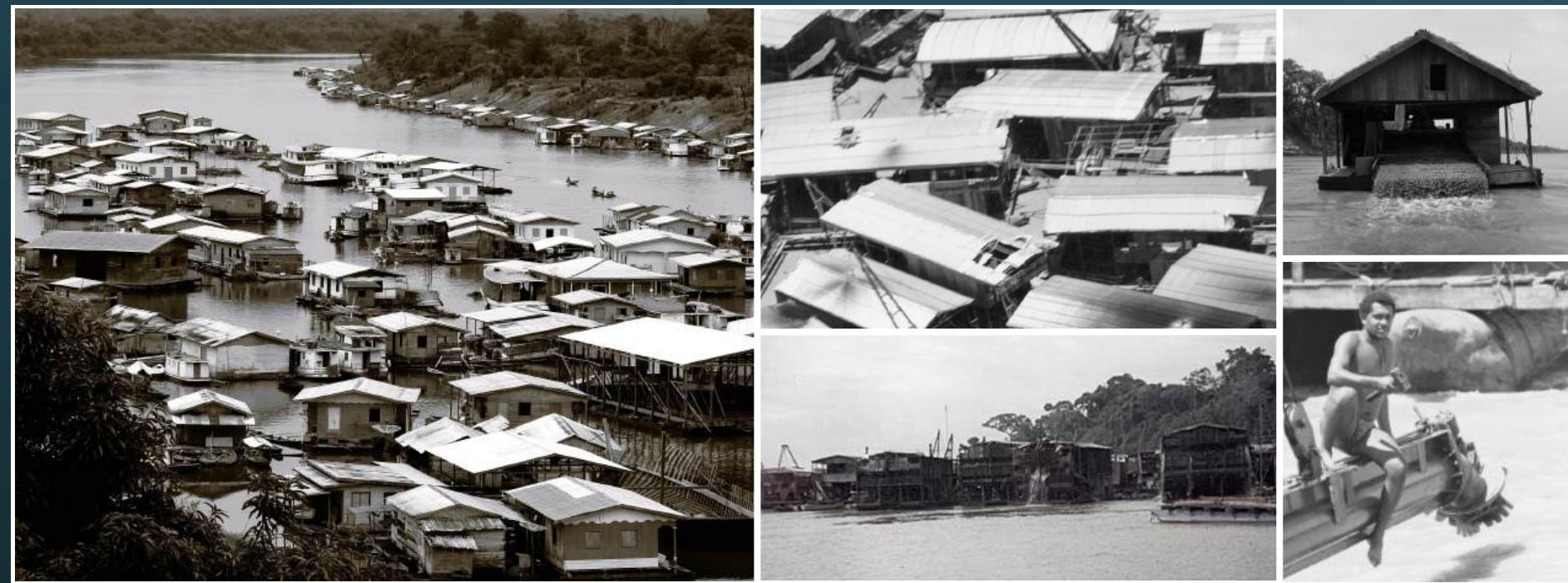
Version: 2026-05-09 \* All currency CAD unless otherwise noted; hectares/ppm/% approximate; totals may not sum due to rounding.



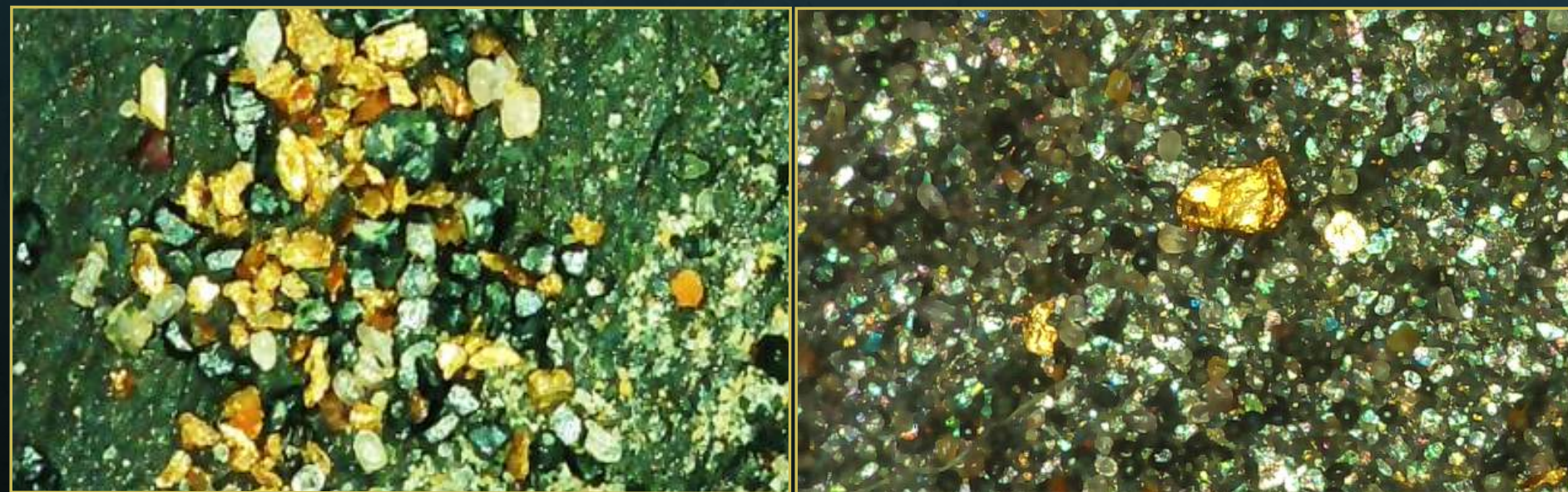
# TARGETING PRESERVED ANCIENT RIVER CHANNELS IN A GOLD-RICH BASIN

## Expansive 20,000 m Aircore + Auger Drill Program Underway

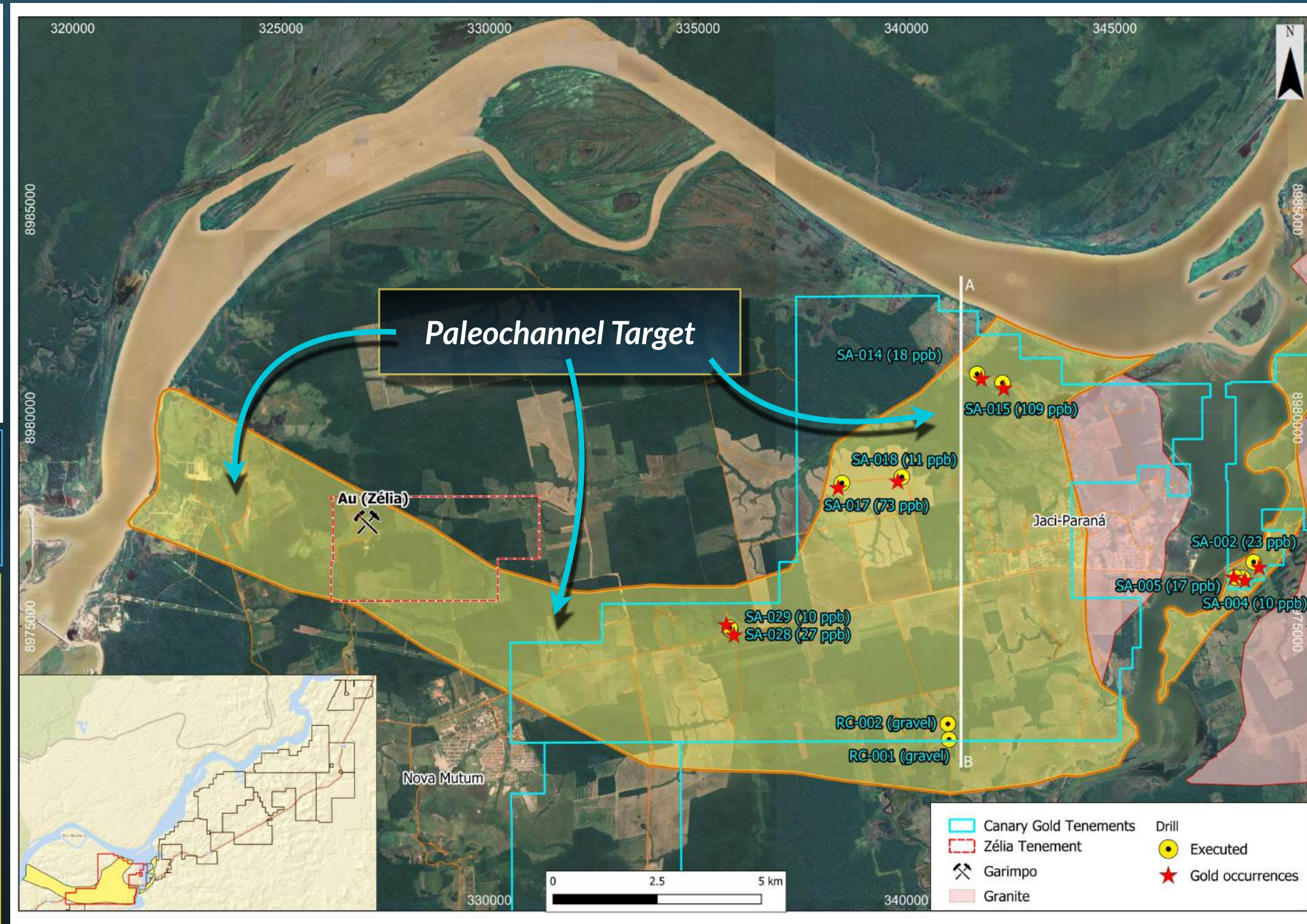
Gold has now been confirmed within the system, with systematic drilling ongoing.



More than 7 million oz are reported to have been dredged historically from the Madeira River, underscoring the basin's fertility.



Canary's field sampling has recovered visible gold from sediments and pan concentrates across the project corridor.



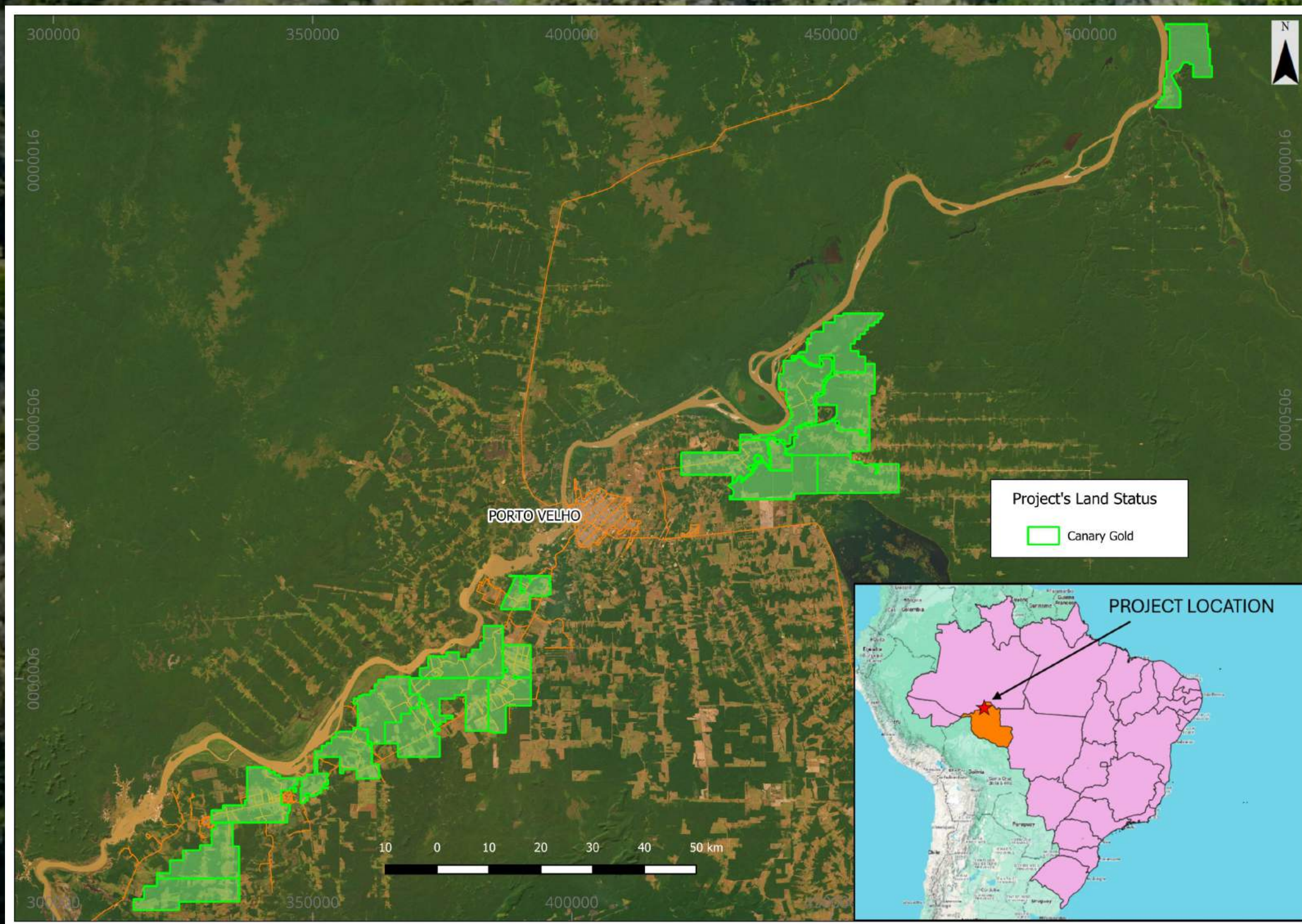
Testing a ~89 km Prospective Paleochannel Corridor



# DISTRICT-SCALE LAND POSITION IN BRAZIL'S MADEIRA RIVER BASIN

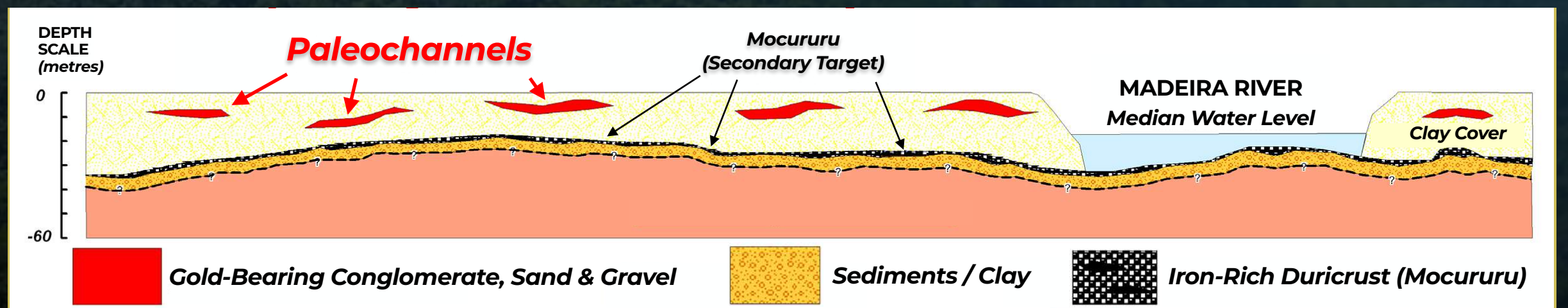
**Canary Gold's large ~163,000 ha consolidated land package covers a broad corridor adjacent to the Madeira River.**

This district-scale position provides room to test multiple paleochannel targets across a gold-rich basin with reported historical production of more than 7 million ounces.

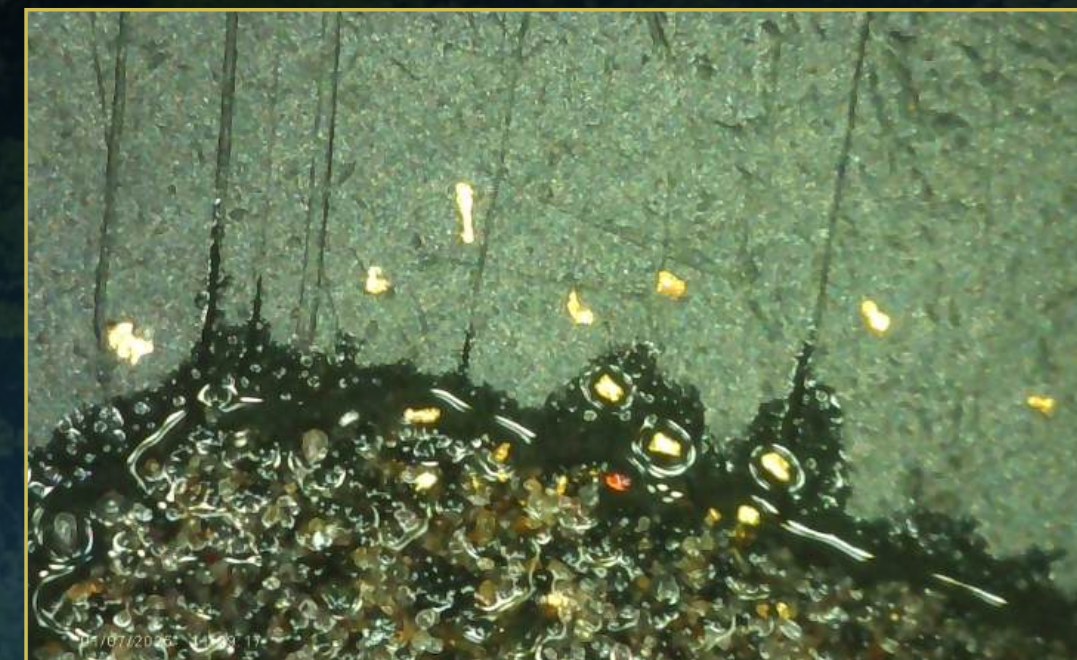


## Primary Target: Gold-Bearing Paleochannels

Drill-testing multiple paleochannel targets adjacent to the gold-producing Madeira River.



**Visible gold recovered during field sampling** supports the broader geological interpretation.

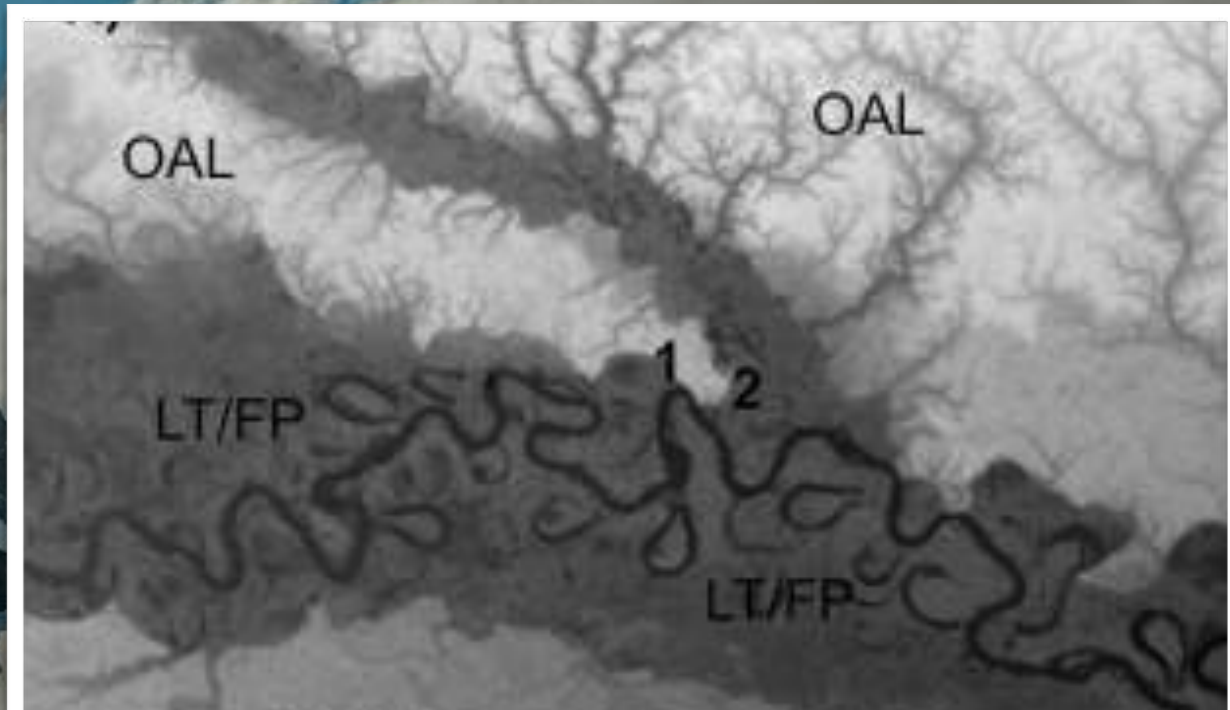
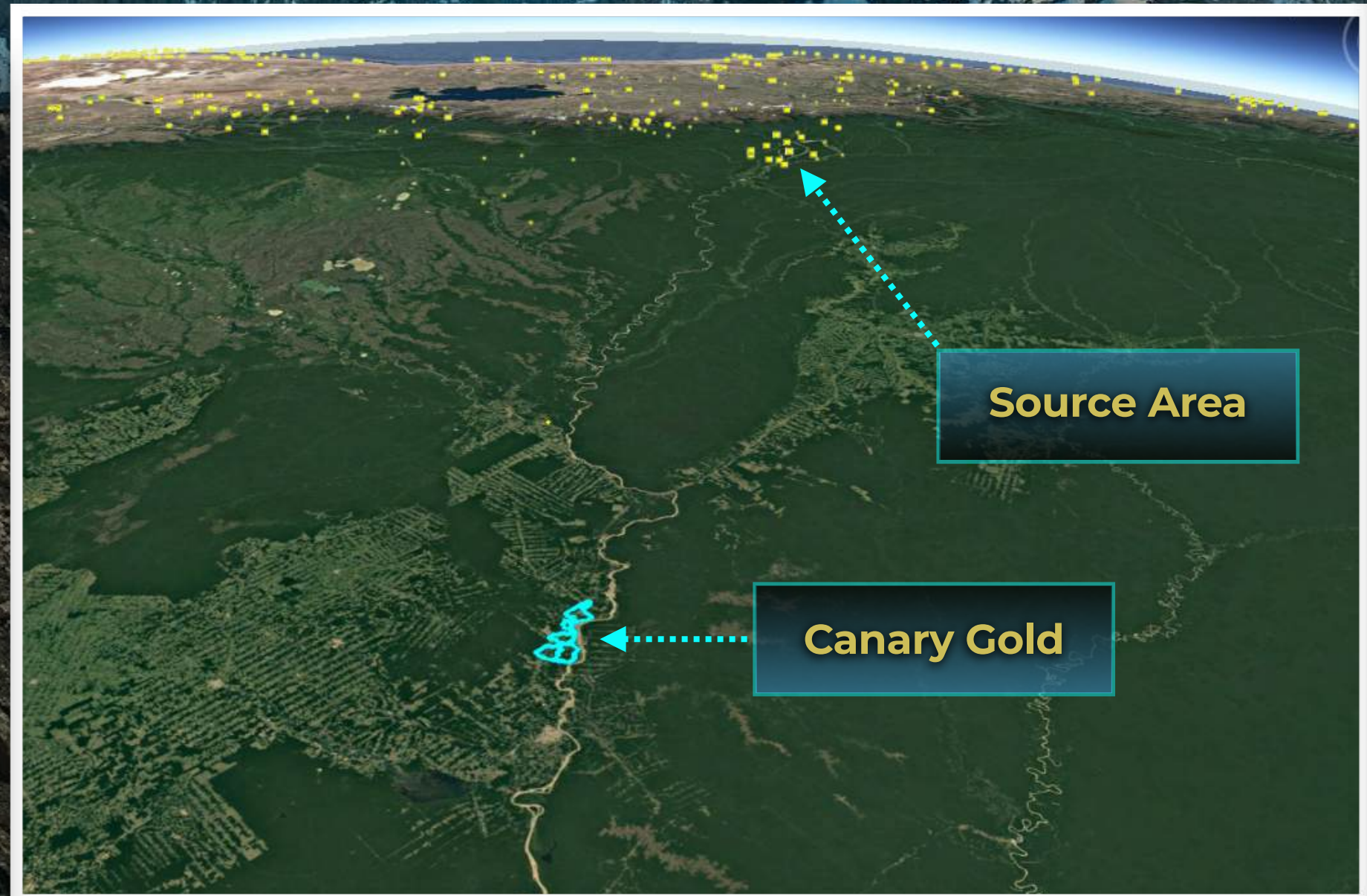
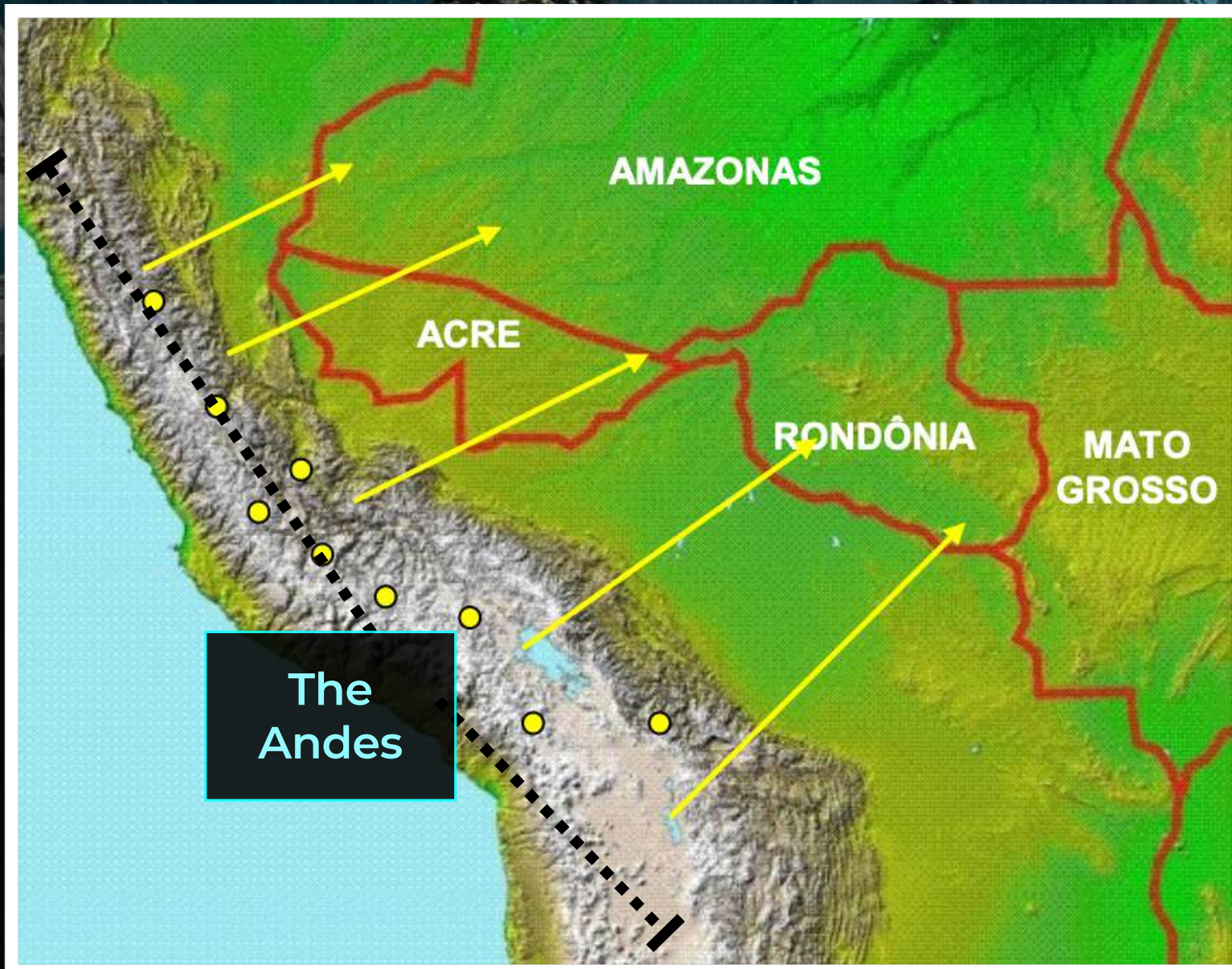




# HOW GOLD ACCUMULATED IN THE MADEIRA RIVER BASIN



As the Andes Mountains rose, gold was transported eastward into Brazil's Madeira Basin, where ancient river systems concentrated it in broad paleochannel networks.



NASA satellite data reveals ancient river channels across Canary's project area (above) and today's active river systems (below).



Canary's exploration model is built around identifying broad paleochannel corridors, then testing them systematically with shallow auger drilling and deeper RC follow-up.

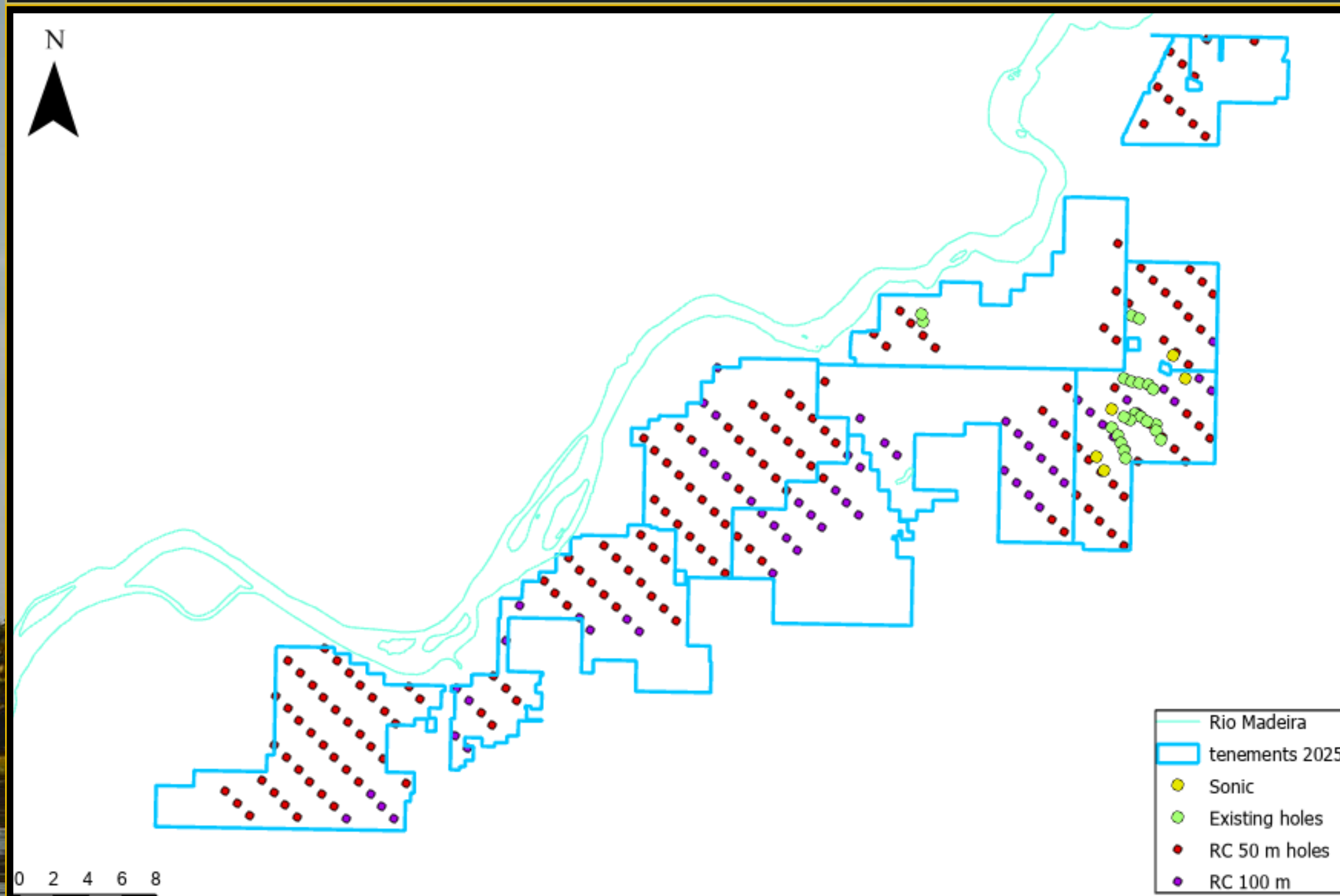
Canary is integrating remote sensing, topography, and geological interpretation to refine where **gold-bearing paleochannels are most likely to occur.**



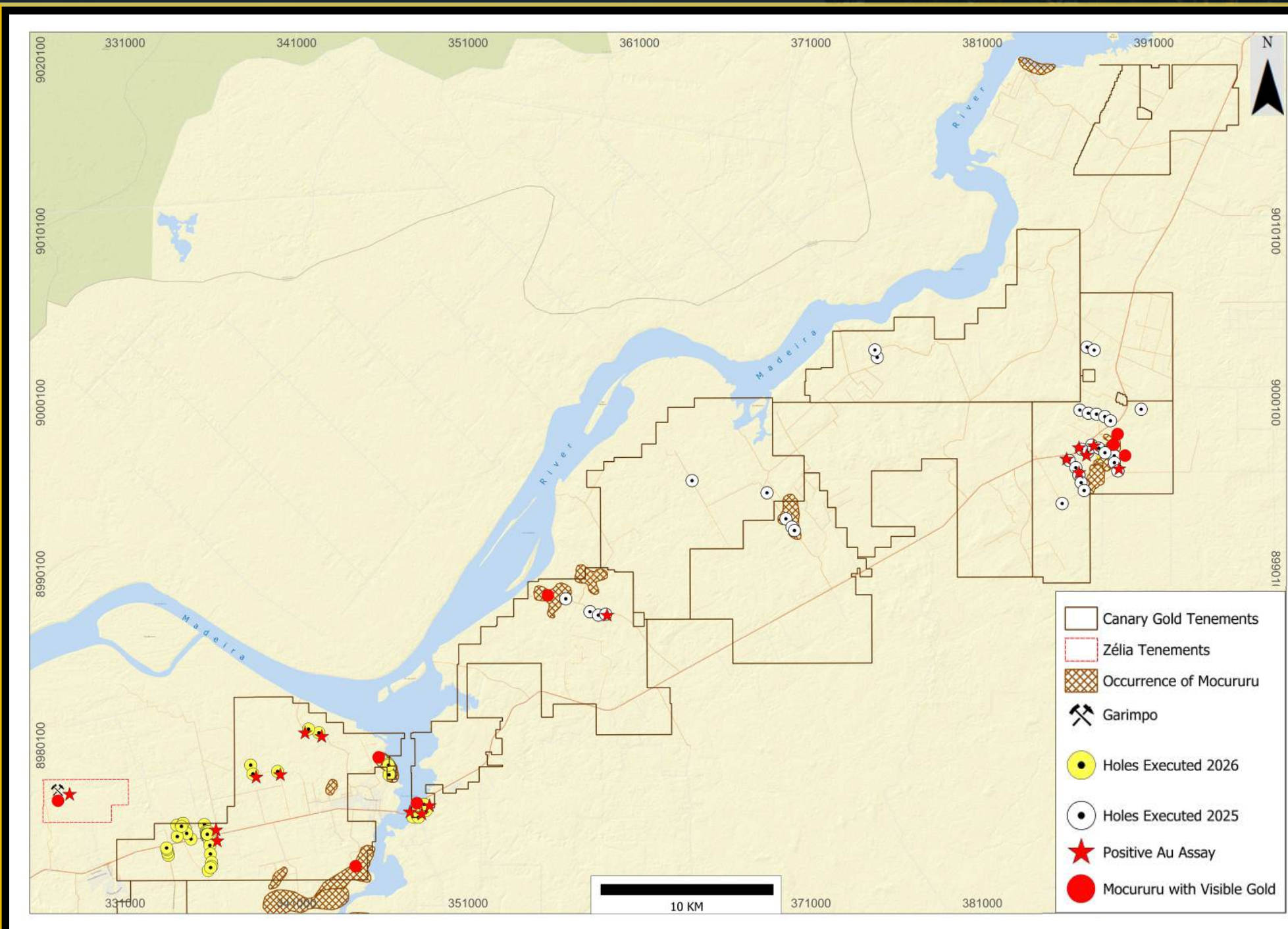
# BROAD PALEOCHANNEL TARGET DEFINED EAST OF THE ACTIVE MADEIRA RIVER

Remote sensing, topographic interpretation, and early drilling have outlined a broad paleochannel target area.

Initial shallow auger drilling has now confirmed the presence of gold within this system.



**25 km Aircore + Auger Program**  
Testing ~89 km prospective corridor

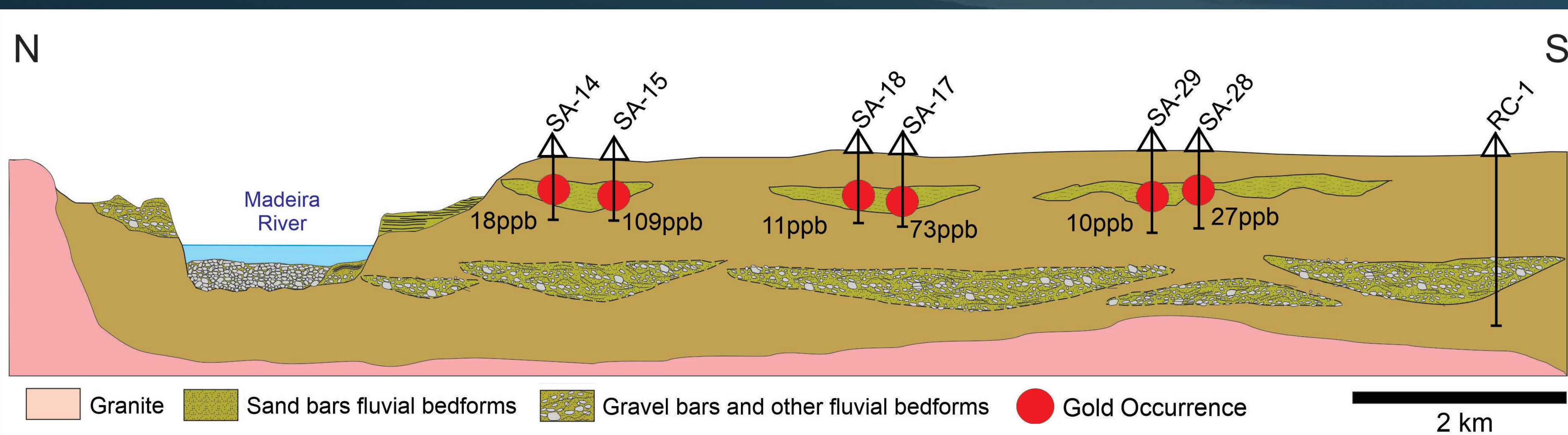


**63 Auger Holes (1,289 m) Completed — First 33 Holes Assayed**  
6 holes returned anomalous gold values (10–109 ppb Au)



# VISIBLE GOLD AND SHALLOW RESULTS SUPPORT DEEPER RC TESTING

Visible gold, together with early 2026 auger assays, supports the interpretation of a gold-bearing paleochannel system.



RC drilling is now targeting deeper gravel-rich horizons where stronger gold concentration may occur.



# EXPERIENCED LEADERSHIP DRIVING DISCOVERY AND RESPONSIBLE GROWTH



Chairman & CEO

## Andrew Lee Smith, B.Sc, P.Geo., ICD.D

**Mr. Smith** is a Professional Geologist with over 25 years of experience successfully exploring, developing and operating African and North American base and precious metals mining projects. He also holds Directorships and management positions with a number of other junior exploration companies. Andrew holds a B.Sc in Earth Sciences from the University of Waterloo and is a professional geologist and a member of the Association of Professional Engineers and Geoscientists of British Columbia. He received the Mining Entrepreneur of the Year Award in 1994 from the Quebec Prospectors Association for his role in mine development with Aurizon and was named Outstanding Alumnus of 2009 by the Science Faculty of the University of Waterloo for his contributions to mineral exploration. In 2015, Andrew competed in the International Corporate Directors Education Program and received the ICD.D accreditation, the only professional designation for Canadian directors recognized both nationally and internationally.



President

## Mark Tommasi

**Mr. Tommasi** is a seasoned capital markets and corporate development professional with over 30 years of experience, including extensive involvement in junior exploration. He has played a key role in guiding numerous companies from early exploration through critical growth stages, leveraging his strategic insight and results-driven approach. Mark's expertise includes building strong industry relationships, securing financing, and enhancing market visibility to attract investment. He specializes in structuring growth strategies, optimizing business models, and positioning companies for both immediate success and long-term sustainability. With extensive C-suite and board-level experience, he provides governance, financial structuring, and strategic oversight that align with each organization's goals. Through his leadership and tailored guidance, Mark has helped emerging companies strengthen their market presence and achieve lasting success within the competitive resource and exploration sectors.



Director

## Hein Poulus, K.C.

**Mr. Poulus** is the first name partner at litigation boutique Poulus Ensom Smith LLP, where he provides strategic legal and governance counsel to a range of corporate clients. Previously, he founded and led the Vancouver litigation group at national law firm Stikeman Elliott, and has held the designation of King's Counsel since 2001. In the 1980s, he broadened his professional experience through senior management roles with Kaiser Resources Ltd., the Denver Broncos, and Southeastern Capital Corporation, a U.S. private equity firm. Mr. Poulus has served as a director and executive with several public companies, including Resinco Capital Partners, Finavera Solar Energy, Terreno Resources, Lions Gate Metals, and Teslin River Resources. He holds an undergraduate degree in Economics and a Law degree from the University of British Columbia, as well as an LL.M. from the London School of Economics. Mr. Poulus continues to serve on several corporate and non-profit boards.



## EXPERIENCED LEADERSHIP DRIVING DISCOVERY AND RESPONSIBLE GROWTH



Director

### Al Kanji, CPA

**Mr. Kanji** is a Chartered Professional Accountant. He retired from KPMG Canada in September 2014, after a career spanning 33 years; 26 of which were as a Corporate Finance Partner focusing principally on acquisitions, divestitures, and financings. He has co-authored several publications, served as a member of a number of committees and private boards, as well as served for two three-year consecutive terms as a member of the Board of Directors of KPMG Canada. Since 2014, Mr. Kanji has been serving as a senior advisor to a family office with investment in several sectors, including mining.



Chief Financial Officer

### Oliver Foeste

**Mr. Foeste** is the founder and Managing Partner of Invictus Accounting Group LLP, bringing extensive executive, finance, and public company compliance experience across multiple sectors, including mining. Before founding Invictus, he held senior finance and accounting roles with several TSX, TSXV, and NYSE-listed issuers, and earned his CPA designation while at Deloitte and a boutique tax advisory firm. He currently serves as Interim CFO of Torq Resources Inc. (TSXV) since January 2024, and CFO of CannapharmaRX Inc. (CSE), Arya Resources Ltd. (TSXV), Tectonic Metals Inc. (TSXV), POWR Lithium Corp. (CSE), and Rover Metals Corp. (TSXV). His previous roles include Interim CFO of Torq Resources Inc., CFO of Interra Copper Corp., Adastra Holdings Inc., and director or CFO of Quri-Mayu Developments Ltd., Inca One Gold Corp., and Pacific Cascade Minerals Inc.



Technical Advisor

### Alan Carter

**Dr. Carter** is the President & CEO of Brazil-focused Cabral Mining, and was a co-founder of both Peregrine Metals Ltd. and Cuprum Resources Ltd., which were sold to Stillwater Mining and B&A Mineracao respectively, and is currently a director and Chairman of both Fremont Gold Inc. and Altamira Gold Corp. He has a B.Sc. degree in Geology from the University of Nottingham, U.K. and a Ph.D. degree in gold geochemistry and structural geology from the University of Southampton, U.K. Dr. Carter has been directly involved in the discovery of 5 gold deposits, including 4 in Brazil, and was a co-founder of Magellan Minerals Inc. which was acquired by Anfield Gold Corp. in May 2016 and is now part of Equinox Gold. He founded Cabral Gold in late 2016 and took the Company public in November 2017.



# RESPONSIBLE MINING — RESTORING THE LAND, RESPECTING THE FUTURE

**Canary is committed to responsible exploration across its ~163,000 hectare land package** — minimizing impact, restoring ecosystems, and creating lasting value for local communities.



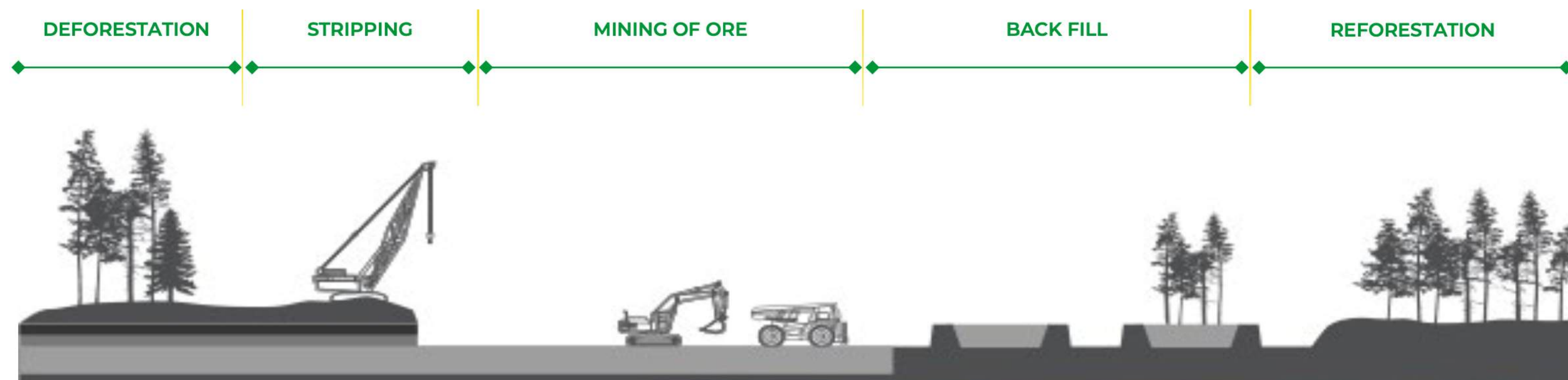
Any future Canary Gold production is intended to be traceable, conflict-free, and responsibly mined under recognized sustainability frameworks.



Using efficient, low-impact exploration methods that protect local water and soil systems.



Planning for rehabilitation of mined areas through native reforestation and long-term land restoration programs.



Canary Gold will draw inspiration from Brazil's Trombetas Mine, which has restored over 8,000 hectares of forest and planted 14 million native trees across 450 species.

Canary plans to develop a large-scale nursery to cultivate millions of seedlings for replanting mined areas with native Amazonian vegetation.

Topsoil reconstitution and habitat restoration will enable progressive ecological recovery post-mining.



# CAPITAL STRUCTURE & OWNERSHIP — POSITIONED FOR GROWTH AND DISCOVERY

| Metric             | Detail     |
|--------------------|------------|
| Shares Outstanding | 75,208,046 |
| Warrants           | 11,779,040 |
| Options            | 12,140,000 |
| Fully Diluted      | 99,127,086 |

**Canary Gold Corp.**  
1199 W Hastings Street, Suite 1400  
Vancouver, BC V6E 3T5  
www.canarygold.ca

|  |
|--|
| Canadian Listing<br><b>CSE: BRAZ</b>       |
| American Listing<br><b>OTCQB: CNYGF</b>    |
| German Listing<br><b>FSE: K5D</b>          |
| ISIN: CA1372241010   WKN: A40HWJ           |
| <i>Transfer Agent: Endeavor Trust Corp</i> |

|   |
|---|
| Fiscal Year End: June 30th                  |
| Incorporated: British Columbia              |
| Auditors: MNP LLP (Vancouver)               |
| Legal Counsel: Beadle Raven LLP (Vancouver) |

*“Canary is reviving a legendary gold province with modern science and a singular focus on discovery.”*

*— Andrew Lee Smith, CEO & Executive Chairman, Canary Gold Corp.*



## Compliance Statement

As of May 2026 Corporate Presentation

### Qualified Person Statement:

Andrew Lee Smith, P.Geo., a Qualified Person as defined by National Instrument 43-101 – Standards of Disclosure for Mineral Projects, has reviewed and approved the scientific and technical information contained in this presentation. Mr. Smith is the CEO and Chairman of Canary Gold Corp. and is not considered independent of the Company.

### Cautionary Note Regarding Forward-Looking Statements:

This presentation contains “forward-looking information” within the meaning of applicable Canadian securities laws and “forward-looking statements” within the meaning of the United States Private Securities Litigation Reform Act of 1995. Such statements may include, but are not limited to, statements regarding exploration plans, geologic interpretations, potential mineralization, and comparisons to other mineral deposits. Forward-looking information is based on current expectations and assumptions, and actual results may differ materially. Readers are cautioned not to place undue reliance on these statements.

### NI 43-101 Exploration Target Disclosure:

This presentation includes reference to a potential quantity and grade of the Mocururu Formation that is conceptual in nature. There has been insufficient exploration to define a mineral resource and it is uncertain whether further exploration will result in the delineation of a mineral resource. Any reference to possible scale, lateral extent, or mineral endowment is speculative and based on limited data.

### SEC Compliance Notice:

The securities of Canary Gold Corp. have not been and will not be registered under the United States Securities Act of 1933, as amended, or any state securities laws. This presentation does not constitute an offer or solicitation to sell any securities in the United States. Mineral terms such as “resource” and “reserve” are used in accordance with Canadian standards and may not be comparable to U.S. definitions under SEC Regulation S-K 1300.

### Comparative Geology Disclaimer:

The Mocururu Formation has been compared in this presentation to the Witwatersrand Basin for conceptual purposes only. No inference of similar scale, continuity, or economic potential should be made. Such comparisons are geologic analogies and not intended to imply equivalency in grade, resource size, or development potential.

# CANARY GOLD



CSE: BRAZ

Thank you!

Mark Tommasi, President

+1 (604) 318 - 1448

[info@canarygold.ca](mailto:info@canarygold.ca)