

DISCOVERING HIGH-GRADE GOLD WITH DISTRICT SCALE POTENTIAL IN NORTHWESTERN ONTARIO

GOLD ROCK

- 1 Fully define the structures and controls of high-grade gold
- 2 Deeper drilling
- 3 Proving the periodicity
- 4 Develop multiple target areas in the Gold Rock Camp (20 km)

REGIONAL DISCOVERIES

HYNDMAN

- 1 Our first regional discovery
- 2 12 km by 2.5 km gold-in-till anomaly corridor
- 3 Successful maiden drill program

SHERRIDON

- 1 First pass drilling and relogging
- 2 Define broad mineralized zones
- 3 New structural interpretation
- 4 Follow up expanded field program

KEY VALUE DRIVERS

EXPERIENCED MANAGEMENT

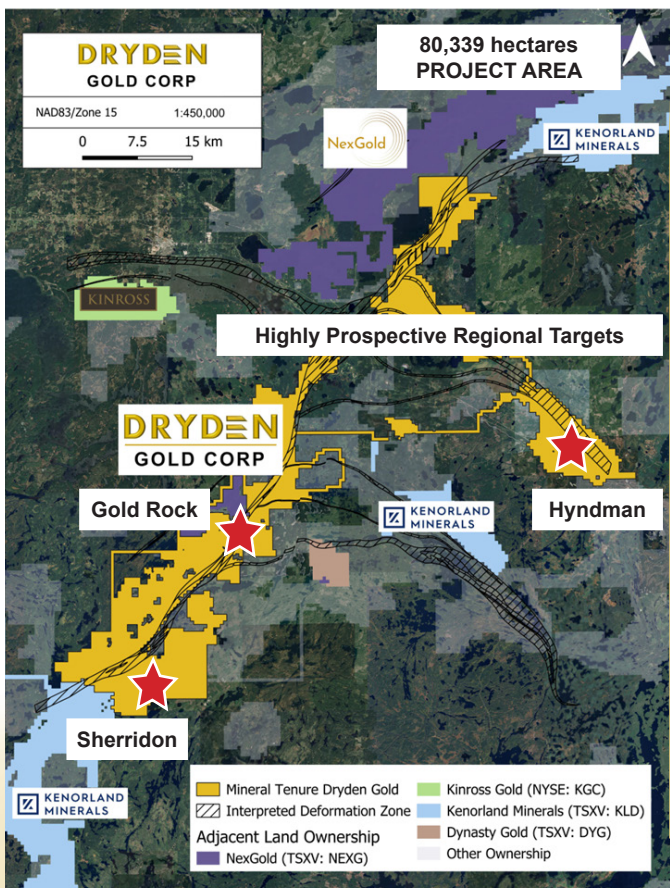
- A board of Directors with a history of success in navigating M&A
- Technical team with extensive **regional experience**

INVESTMENT UPSIDE

- Canada's newest high-grade gold district
- 2026 fully funded exploration program
- Near surface, high-grade gold in the Gold Rock Camp
- Under explored and never tested at depth
- Regional Greenfield targets at Hyndman & Sherridon
- Strategic shareholders: Centerra Gold 9.80%, Alamos Gold 10.46%

FAVOURABLE MINING JURISDICTION

- Ontario ranked 2nd most attractive jurisdiction by the Fraser Institute
- Excellent infrastructure
- Year round drilling at industry low costs
- Significant tax benefits and government grants
- Collaborative relationships with First Nations communities



GOLD ROCK CAMP

EXCEPTIONAL high-grade gold intercept *historic hole*

3,497 g/t gold over 8.50 meters, including 53,700 g/t gold over 0.55 meters.



MULTIPLE PARALLEL HANGING WALL STRUCTURES

Showing: 301.67 g/t gold over 3.90 meters, including 1,930 g/t gold over 0.60 meters.



Scan for more VG photos!



