



Redhawk
R E S O U R C E S

CORPORATE PRESENTATION

August 2011

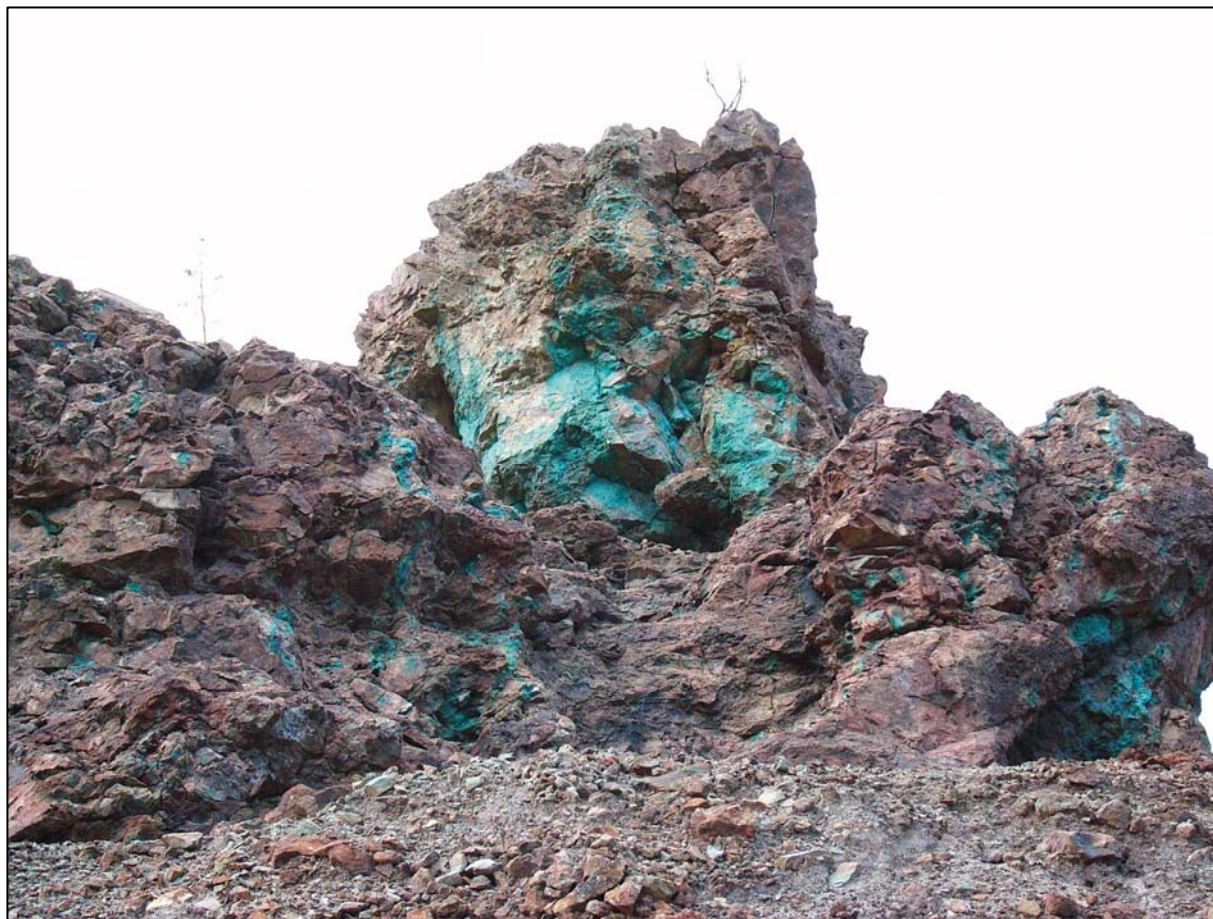
TSX-V: **RDK**

OTCQX: **RHWKF**



Copper Creek Project

Example of a High-Grade Copper Breccia Pipe
above American Eagle porphyry body

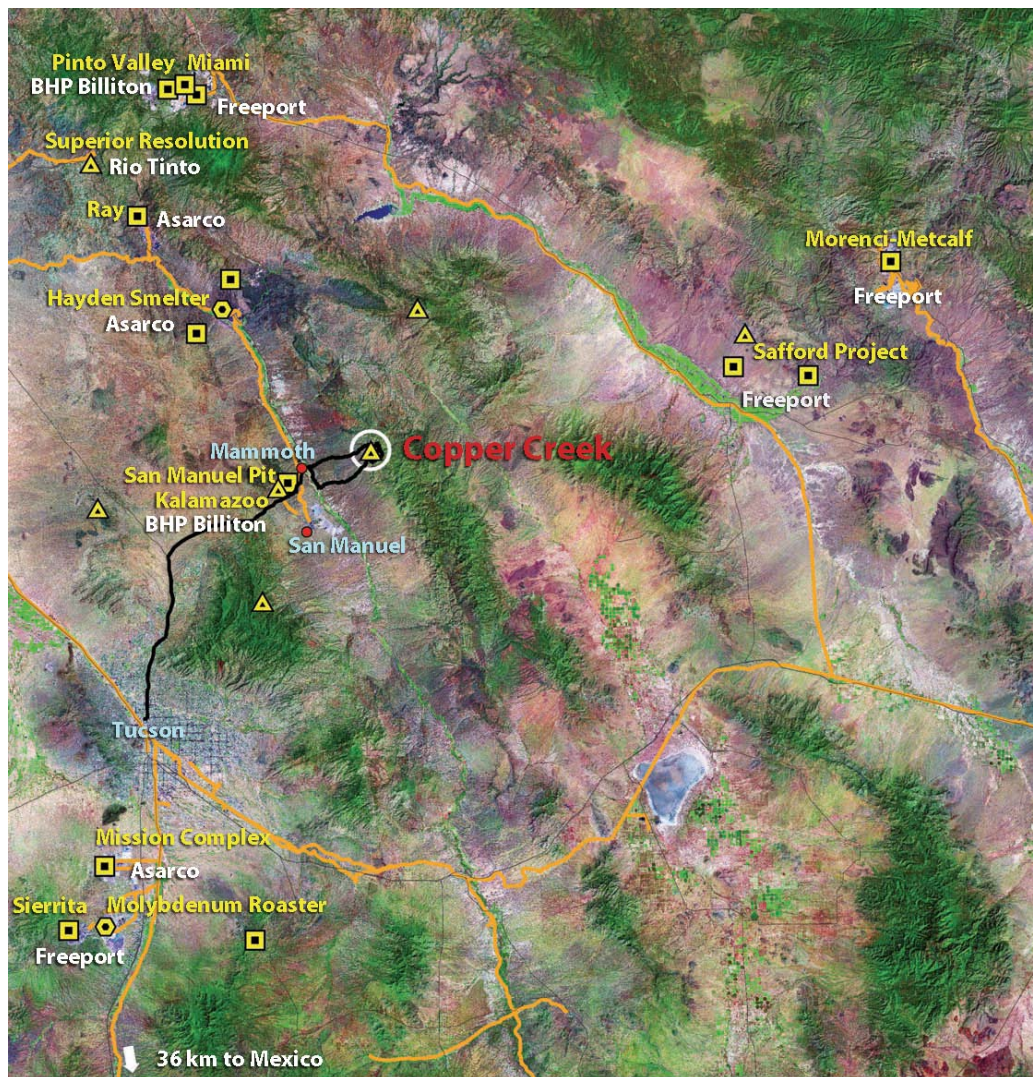


Copper Stained Breccia Pipe Outcrop

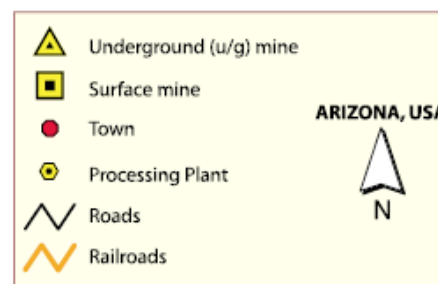
Copper Creek Project Location



Redhawk
RESOURCES



- Seven square mile contiguous property
- Located in most prolific copper belt in the United States
- Surrounded by major copper producers
- Excellent infrastructure including rail, roads, water, power and services
- Nearest smelter within 30 miles



Redhawk Achievements



Redhawk
R E S O U R C E S

- Current NI 43-101 Compliant Resource of 0.66 Billion lbs Cu Eq M&I + 2.75 billion lbs Cu Eq Inferred
- Filed Aquifer Protection Permit Application to allow underground development and exploration; approved July 30, 2009
- Current drilling program: district exploration and resource expansion
- Significant copper and molybdenum NI 43-101 resource with large expansion capability
- Over 525,000 feet of drilling completed on the property
- Over 80% of property remains to be tested including over 350 breccias
- Staked and purchased additional property to complete the mining district
- Completed 15,000 foot drill program on main breccias in October 2007
- Completed 35,700 foot drill program on American Eagle porphyry zone, Keel and breccias in 2008 targeting expansion and upgrading of resources

- Completed four separate resource calculations by independent consultants to NI 43-101 standards
- Completed Scoping Study on the breccias, Keel and American Eagle in February 2009. Scoping Study updated in March 2010



Mineral Resource Summary (September 9, 2008)

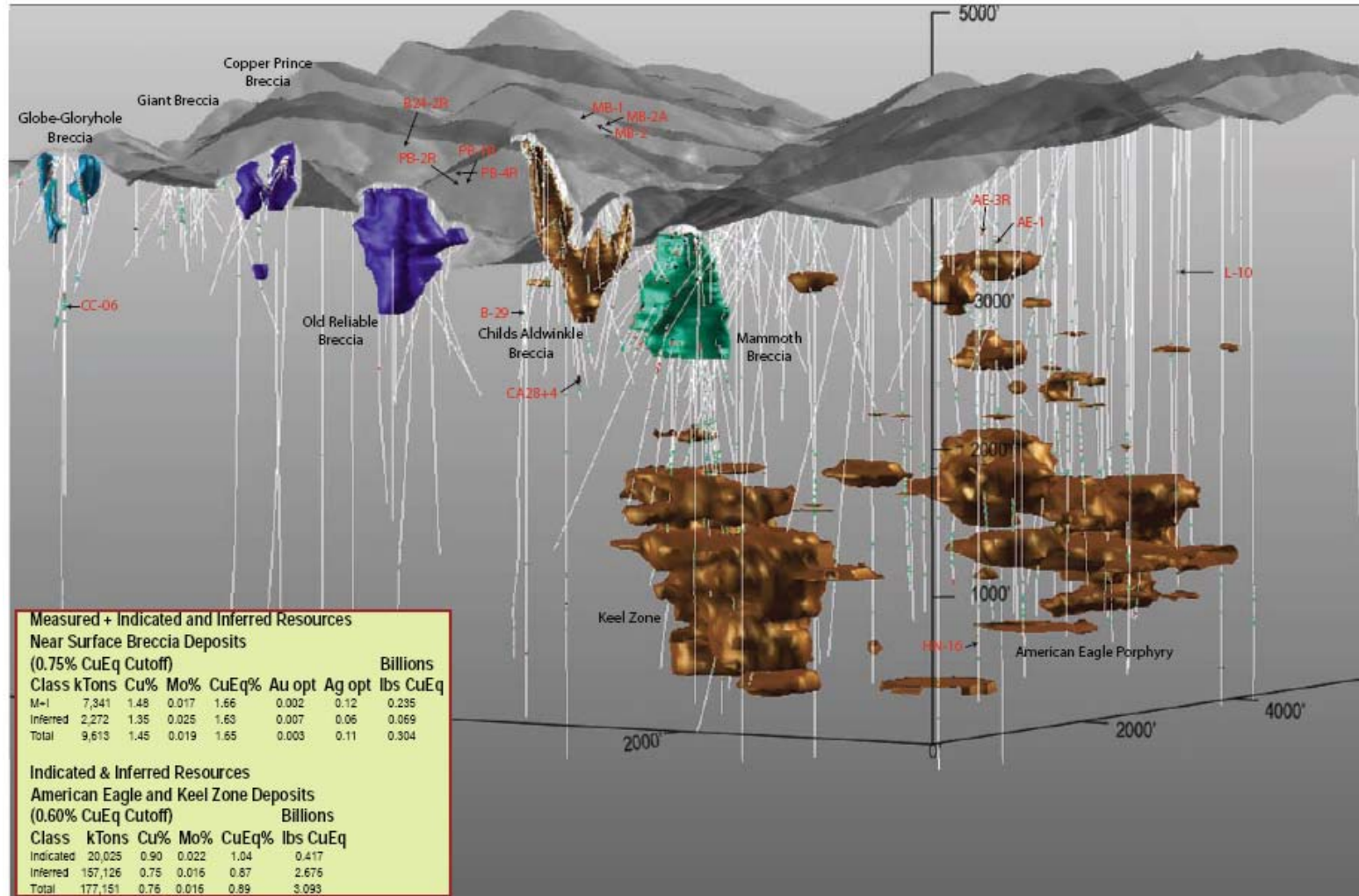


Deposit	Ktons	% Copper	% Moly	Gold oz/ton	Silver, oz/ton	% Copper Equiv.
Breccia Mineral Resources at a 0.75% CuEq cutoff						
MEASURED + INDICATED						
Mammoth	3,580	1.49	0.001	0.001	0.14	1.54
Childs Aldwinkle	1,592	1.77	0.063	0.005	0.15	2.30
Old Reliable	1,543	1.06	0.013	0.003	0.09	1.21
Copper Prince	467	1.93	0.005	0.001	0.08	1.99
Globe	159	1.13	0.003	0.000	0.05	1.17
Total M+Ind	7,341	1.48	0.017	0.002	0.12	1.66
INFERRED						
Mammoth	572	1.13	0.009	0.010	0.08	1.35
Childs Aldwinkle	499	2.08	0.057	0.004	0.09	2.54
Old Reliable	403	1.18	0.018	0.001	0.03	1.32
Copper Prince	183	2.26	0.014	0.001	0.05	2.38
Globe	79	1.07	0.004	0.000	0.05	1.12
Outside Breccias	536	0.76	0.026	0.015	0.03	1.14
Total Inferred	2,272	1.35	0.025	0.007	0.06	1.63
Porphyry Mineral Resources at a 0.60% CuEq cutoff						
INDICATED						
Keel Zone	20,025	0.90	0.022	-	-	1.04
Total Indicated	20,025	0.90	0.022	-	-	1.04
INFERRED						
Keel Zone	49,663	0.78	0.024	-	-	0.94
American Eagle	107,463	0.73	0.012	-	-	0.81
Total Inferred	157,126	0.75	0.016	-	-	0.87

Copper Creek Project

Sectional View of Existing Resource Bodies

Comprising Resource of 0.66 billion lbs Cu Eq M&I + 2.75 billion lbs Cu Eq Inferred



Measured + Indicated and Inferred Resources						
Near Surface Breccia Deposits (0.75% CuEq Cutoff)						
Class	kTons	Cu%	Mo%	CuEq%	Au opt	Ag opt
M-1	7,341	1.48	0.017	1.66	0.002	0.12
Inferred	2,272	1.35	0.025	1.63	0.007	0.06
Total	9,613	1.45	0.019	1.65	0.003	0.11

Indicated & Inferred Resources						
American Eagle and Keel Zone Deposits (0.60% CuEq Cutoff)						
Class	kTons	Cu%	Mo%	CuEq%	lbs CuEq	
Indicated	20,025	0.90	0.022	1.04	0.417	
Inferred	157,126	0.75	0.016	0.87	2,675	
Total	177,151	0.76	0.016	0.89	3,093	

NI 43-101 Resource Estimate by Independent Mining Consultants, Inc (IMC)
Grade (CuEq) is based on \$2.25/lb Cu, \$15.00/lb Mo, \$600/oz Au & \$12.00/oz Ag

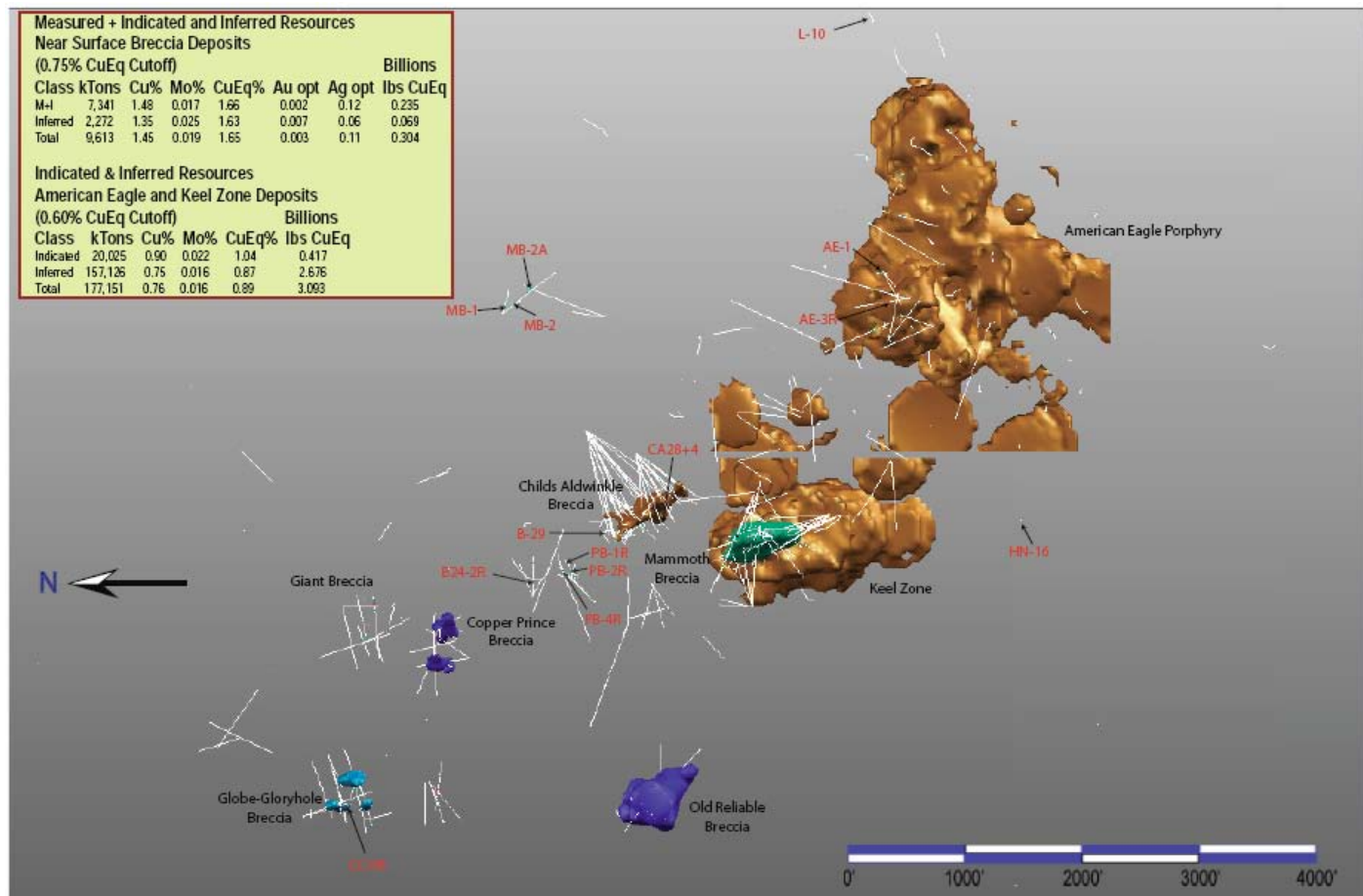
American Eagle and Keel Zone (0.60% CuEq cutoff)
Grade (CuEq) is based on \$2.25/lb Cu and \$15.00/lb Mo



Copper Creek Project

Plan View of Existing Resource Bodies

Comprising Resource of 0.66 billion lbs Cu Eq M&I + 2.75 billion lbs Cu Eq Inferred



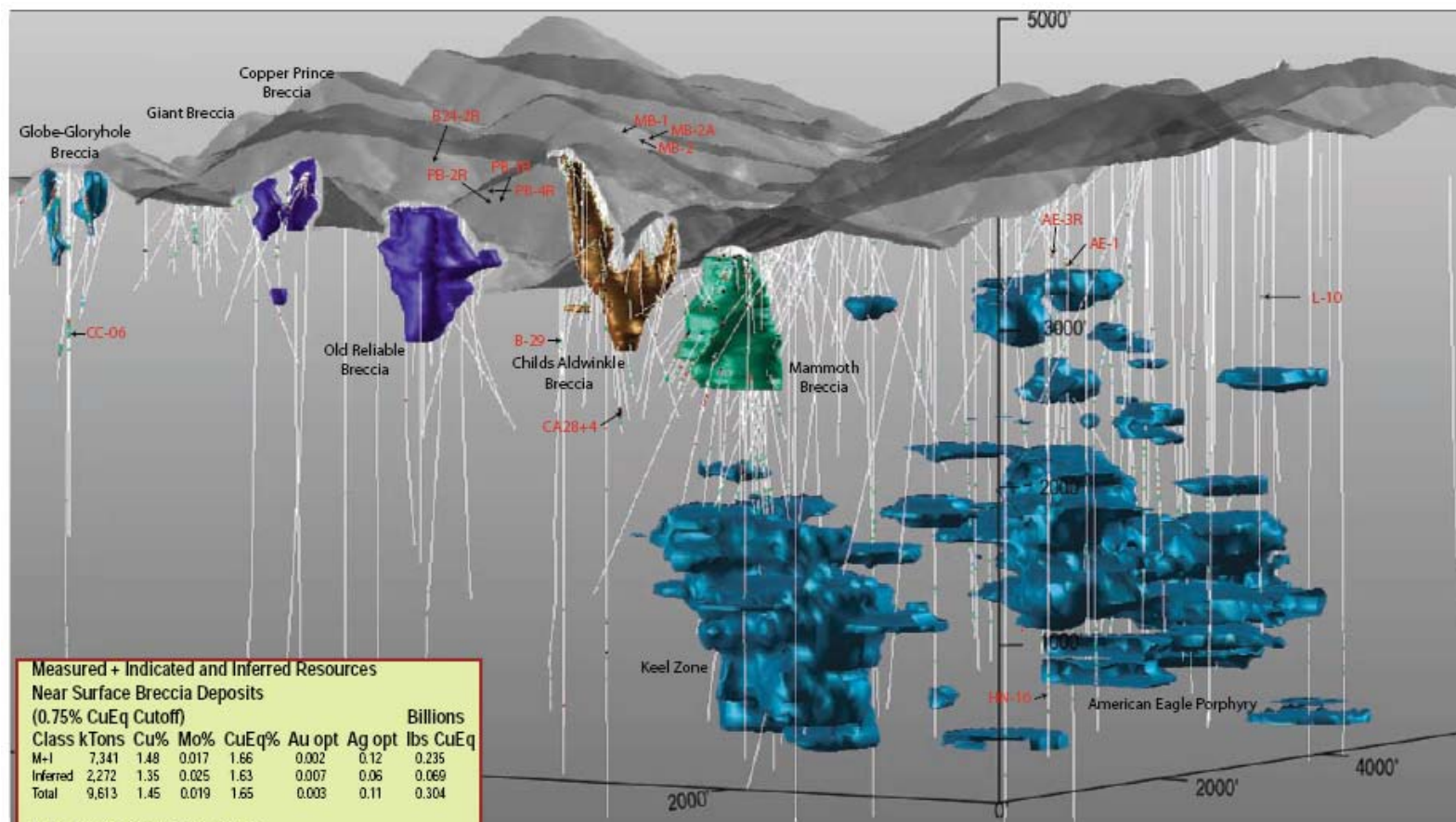
NI 43-101 Resource Estimate by Independent Mining Consultants, Inc (IMC)
Grade (CuEq) is based on \$2.25/lb Cu, \$15.00/lb Mo, \$800/oz Au & \$12.00/oz Ag

American Eagle and Keel Zone (0.60% CuEq cutoff)
Grade (CuEq) is based on \$2.25/lb Cu and \$15.00/lb Mo



Copper Creek Project

Sectional View of Existing Resource Bodies
Showing American Eagle and Keel Zone at 0.50% CuEq cutoff



Measured + Indicated and Inferred Resources

Near Surface Breccia Deposits

(0.75% CuEq Cutoff)

Class	kTons	Cu%	Mo%	CuEq%	Au opt	Ag opt	Billions lbs CuEq
M+I	7,341	1.48	0.017	1.66	0.002	0.12	0.235
Inferred	2,272	1.35	0.025	1.63	0.007	0.06	0.069
Total	9,613	1.45	0.019	1.65	0.003	0.11	0.304

Indicated & Inferred Resources

American Eagle and Keel Zone Deposits

(0.50% CuEq Cutoff)

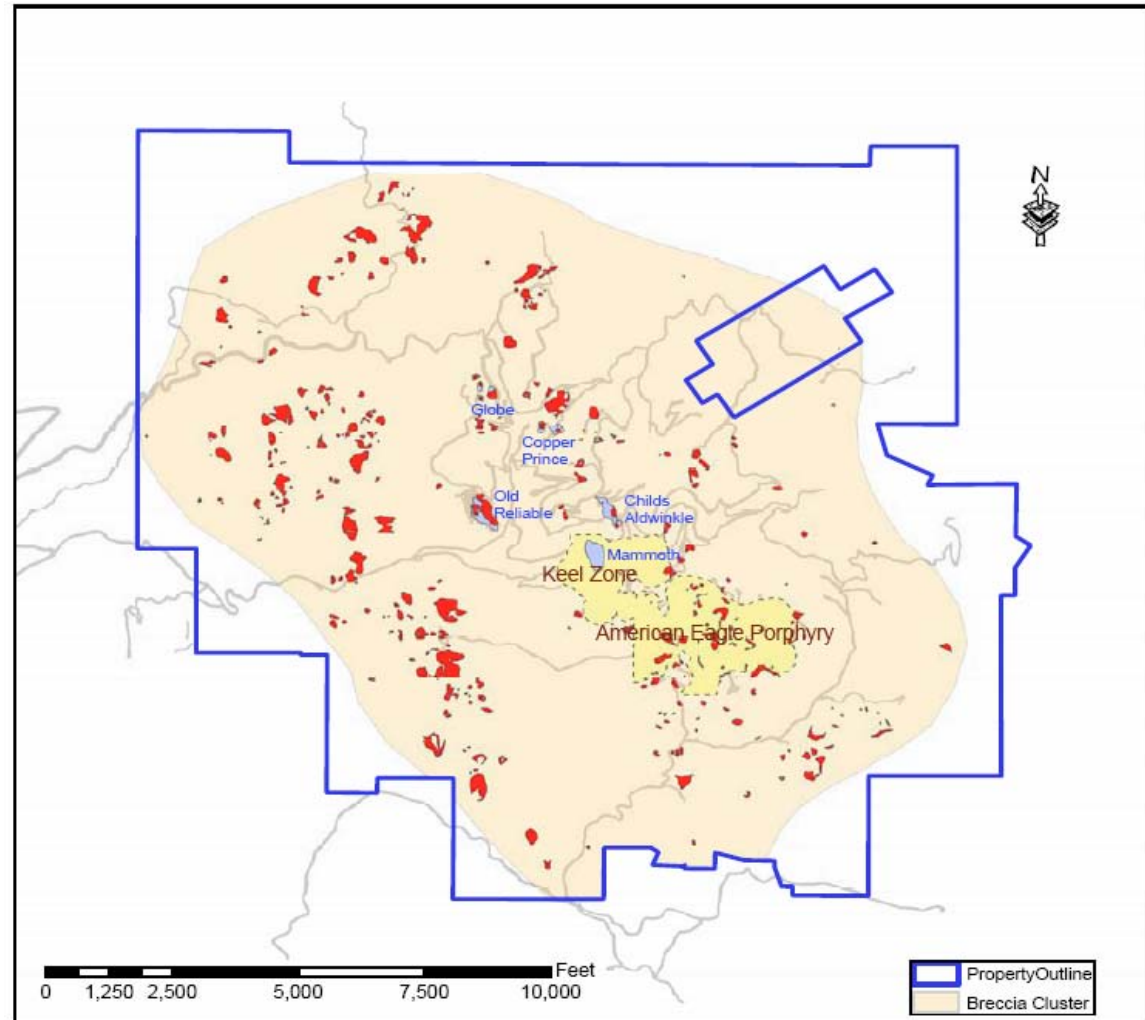
Class	kTons	Cu%	Mo%	CuEq%	Billions lbs CuEq
Indicated	20,313	0.89	0.021	1.03	0.420
Inferred	267,776	0.64	0.013	0.74	3.887
Total	288,089	0.66	0.014	0.76	4.307

NI 43-101 Resource Estimate by Independent Mining Consultants, Inc (IMC)
Grade (CuEq) is based on \$2.25/lb Cu, \$15.00/lb Mo, \$600/oz Au & \$12.00/oz Ag

American Eagle and Keel Zone (0.50% CuEq cutoff)
Grade (CuEq) is based on \$2.25/lb Cu and \$15.00/lb Mo



Potential outside the known resources is large



This cluster of some 400 individual pipes is likely the surface indication of a Cu-Mo mineralizing stock at depth, extending at least 5 by 3 km (~3 by 2 miles)



Redhawk Conceptual Mine Plan

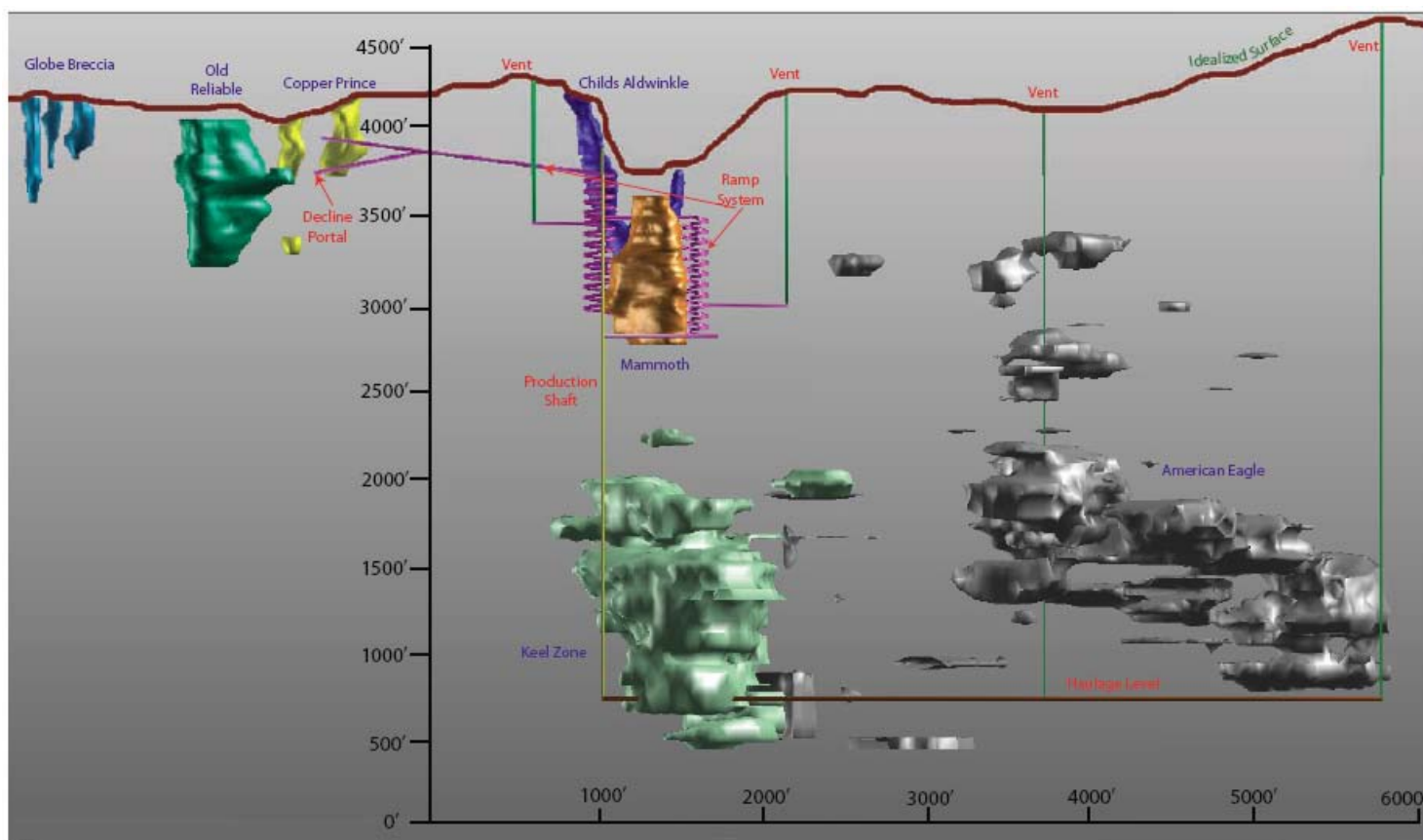
- **Begin mining of higher-grade near surface breccias (CA, Mammoth, Copper Prince) at 2,500 tons per day utilizing exploration/development decline system currently in permitting**
- **Mine breccia using a combination of blasthole stoping with backfill and cut and fill methods**
- **Use cash flow from initial breccia mining to continue development down to the Keel and American Eagle resources using decline/ramp system and sinking production shaft**
- **Mine Keel and American Eagle resources at 10,000 tons per day using room and pillar/post and pillar method with engineered backfill; continue breccia deposit mining for a total of 12,500 tons per day**
- **Mining produces a copper concentrate and molybdenum concentrate**



Redhawk
RESOURCES

Copper Creek Project

Sectional View of Resource Bodies and Conceptual Mine Plan



View looking north-northeast

Scoping Study

2,500 – 10,000 tpd – NI 43-101 Compliant – March 2010 KD Engineering Co., Inc.



Prices used in Study: Cu \$2.75/lb, Mo \$15.00/lb, Ag \$12.00/tr oz, Au \$750/tr oz

Breakeven cash cost at 0% Discount Rate: \$1.77/lb Cu

Breakeven cash cost at 7.5% Discount Rate: \$2.05/lb Cu

IRR at \$2.75/lb Cu: 20.4%

Discount Rate	Pre-Tax NPV
5%	\$539.1 million
7.5%	\$350.0 million
10%	\$222.7 million

Indicated Economic Resources						
Deposit	Cu Cutoff	Tons (short)	Cu%	Mo%	Au opt	Ag opt
Childs	1.00%	1,355,000	1.964	0.061	0.006	0.172
Prince	1.00%	433,000	2.132	0.005	0.001	0.083
Globe	1.00%	92,000	1.267	0.003	0.000	0.048
Mammoth	1.30%	2,213,000	1.850	0.001	0.001	0.160
Old Reliable	1.30%	519,000	1.585	0.014	0.002	0.080
Subtotal Breccias		4,612,000	1.869	0.021	0.003	0.145
Keel (Indicated)	0.70%	17,188,000	0.950	0.023	not estimated	not estimated
Keel (Inferred)	0.70%	31,738,000	0.910	0.030	not estimated	not estimated
AE (Inferred)	0.70%	64,200,000	0.830	0.015	not estimated	not estimated
Subtotal Porphyry		113,126,000	0.871	0.020	not estimated	not estimated
Grand Total		117,738,000	0.910	0.020	0.000	0.000

Indicated Economic Resources for Keel and American Eagle 0.90% Cu Cutoff					
Deposit	Tons (short)	Cu%	Mo%	Au opt	Ag opt
Keel (Ind. + Inf.)	26,450,000	1.120	0.039	not estimated	not estimated
AE (Inferred)	27,463,000	1.010	0.017	not estimated	not estimated
Subtotal Porphyry	53,913,000	1.106	0.028	not estimated	not estimated



2010 Scoping Study Average Contained and Produced Metals

Per Year – Year 1 through Year 4 at 2,500 Short Tons Per Day Production				
Metal	Contained Pounds	Contained Metric Tons	Recovered Pounds	Recovered Metric Tons
Cu	37,963,600	17,225	35,254,200	15,996
Mo	773,400	351	615,600	279
Au	2,664 troy oz	83 kg	1,066 troy oz	33 kg
Ag	114,830 troy oz	3,577 kg	102,925 troy oz	3,206 kg
Per Year – Year 5 through Year 12 at 10,000 Short Tons Per Day Production (3,800,000 tpy)				
Metal	Contained Pounds	Contained Metric Tons	Recovered Pounds	Recovered Metric Tons
Cu	85,775,750	38,918	77,444,125	35,138
Mo	2,040,750	926	1,610,875	731
Au 0.003 opt*	11,400 troy oz	355 kg	4,560 troy oz	142 kg
Ag 0.06 opt*	228,000 troy oz	7,092 kg	205,200 troy oz	6,382 kg
Per Year – Year 13 through Year 20 at 10,000 Short Tons Per Day Production (3,600,000 tpy)				
Metal	Contained Pounds	Contained Metric Tons	Recovered Pounds	Recovered Metric Tons
Cu	76,608,000	34,758	68,947,000	31,283
Mo	2,016,000	915	1,767,000	801.7
Au 0.003 opt*	10,800 troy oz	336 kg	4,320 troy oz	134 kg
Ag 0.06 opt*	216,000 troy oz	6,718 kg	194,400 troy oz	6,046 kg

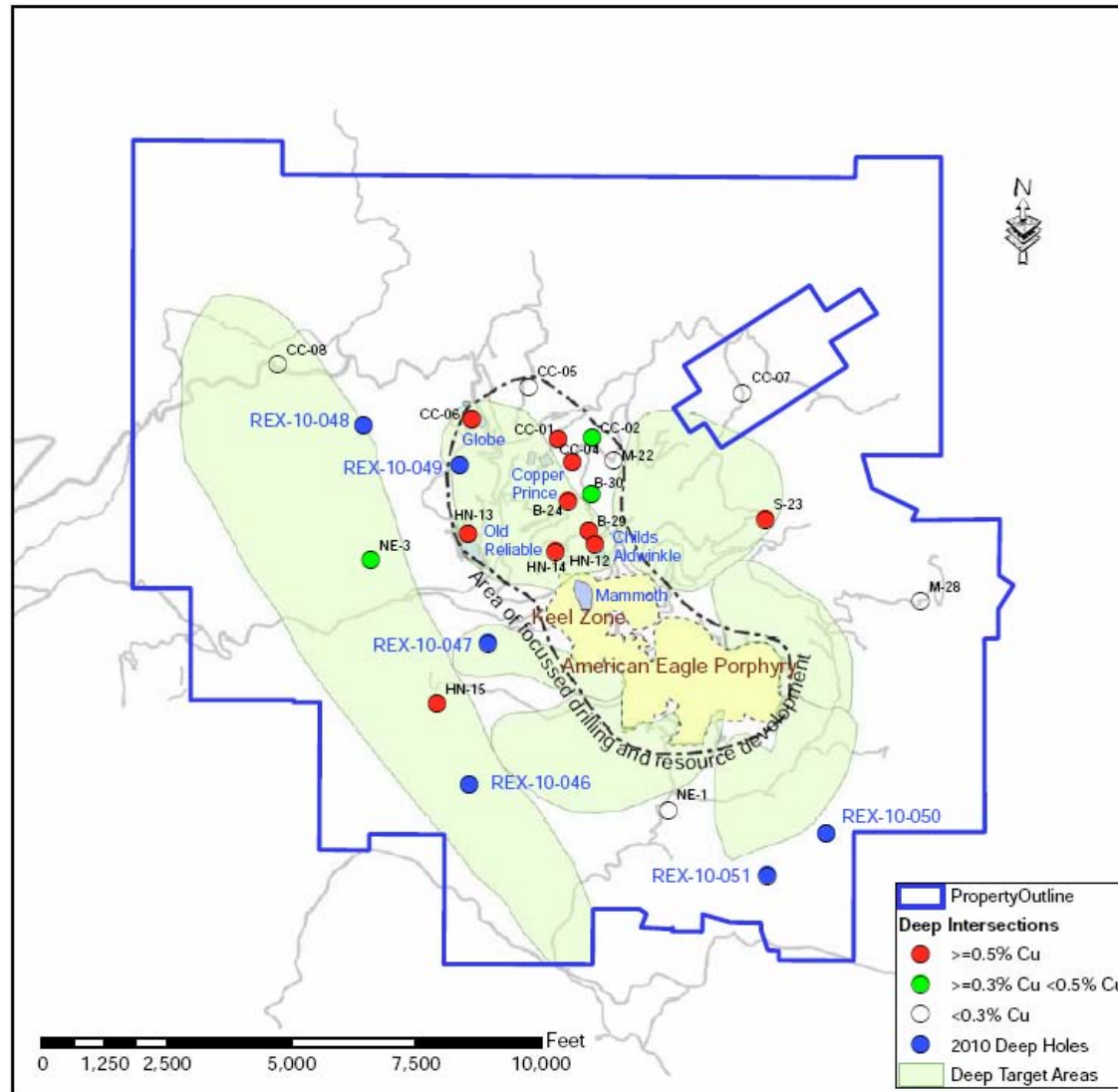
* Note: Gold and silver years 5 through 20 are estimated



Copper Creek 2010-2011 Development Plan

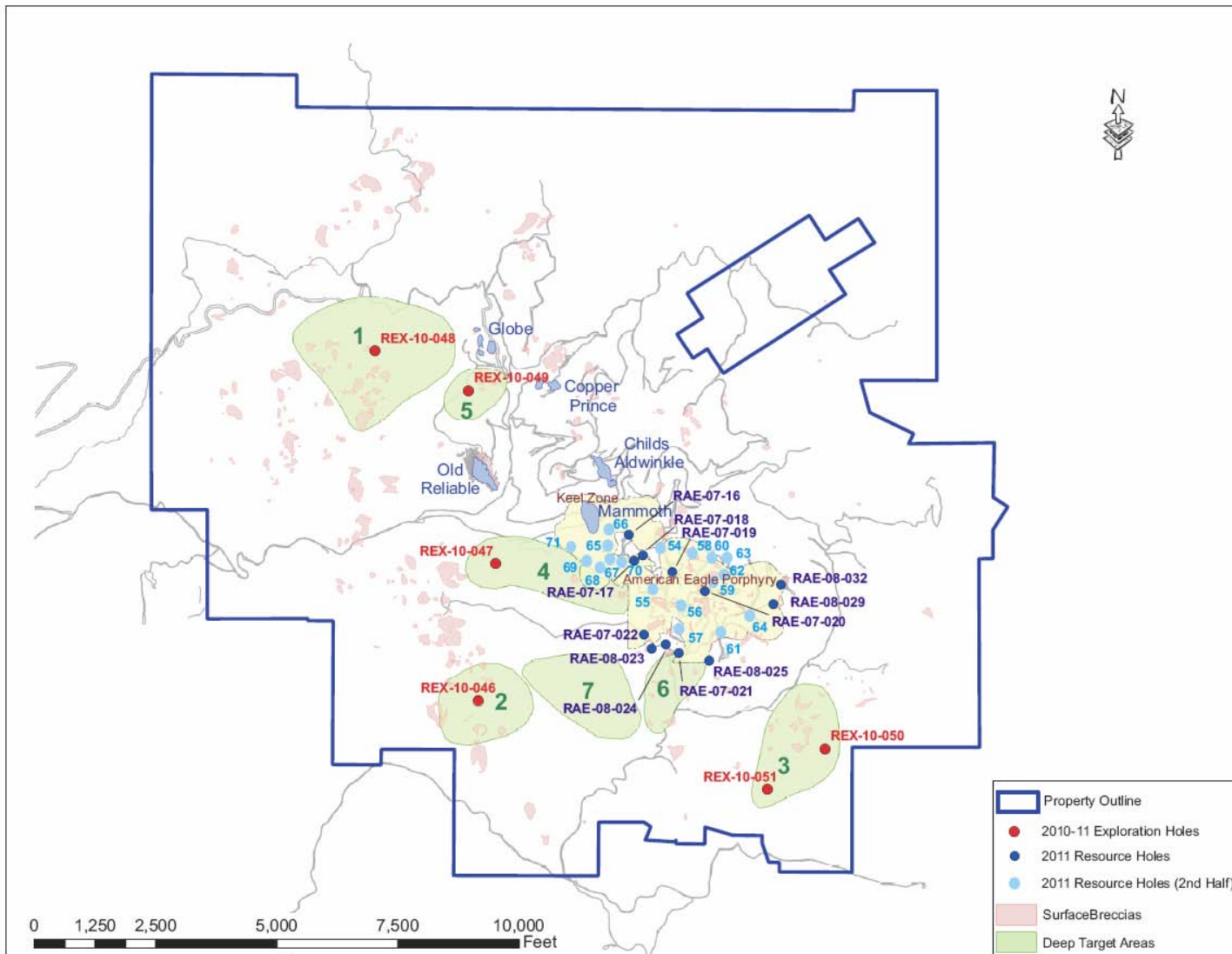
- **Continue permitting to minimize timeline to commencement of decline and production**
- **Continued district exploration for new deposits**
- **Drilling for upgrading current resources**
- **Drilling for resource expansion**
- **Broaden management for development and production expertise**
- **Pursue strategic partner for further development or acquisition of Copper Creek**

Exploration potential and new holes drilled in 2010





2010-2011 District Exploration and Resource Drilling





Redhawk
RESOURCES

Global Examples – High primary grades in porphyry copper deposits

Globally the premier examples of porphyry copper deposits with elevated primary grades are those with substantial proportions of ore hosted by basaltic to andesitic wall rock. The high iron content in these rocks readily reacts with porphyry ore fluids, thereby “dumping” copper in a restricted volume of rock. (compiled by Brock Riedell)

Deposit	Prod+Res (Mt)	Cu (%)	Au (g/t)	Key host rock(s)	References
GLOBAL EXAMPLES					
El Teniente, Chile	12,400 Incl 2,852	0.62 1.31	-- --	Miocene gabbro and basaltic andesite	Cannell et al, 2005; Long, 1995
Oyu Tolgoi, Mongolia	1,150	1.3	0.47	Devonian basalt	Khashgerel et al, 2006
ARIZONA EXAMPLES					
Resolution	1,341	1.51	--	Proterozoic diabase (40% of ore)	Manske and Paul, 2002; Ballantyne et al, 2003; Mercer, 2008
Ray	894	0.87	--	Proterozoic diabase (80% of ore)	Phillips et al, 1974; Long, 1995
Dos Pobres (Stafford District)	363 Incl ~80	0.72 ~1.25	0.34 + 0.5	Cretaceous-Paleocene andesite	Langton and Williams, 1982; Long, 1995
San Manuel-Kalamazoo	1,012	0.71	--	Quartz monzonites (minimal mafic rocks)	Lowell and Guilbert, 1970; Long, 1995



Redhawk
RESOURCES

Redhawk Resources Management, Directors and Consultants

Board of Directors

- **R. Joe Sandberg**, BSc., MBA, AIPG
- **J. Stephen Barley**, B.Com., LLB.
- **Steven C. Bastable**
- **Darryl J. Yea**, B.Com.
- **Gregory E. McKelvey**, M.S. Geol.

Management Team

- **R. Joe Sandberg**, BSc., MBA, AIPG, President and CEO
- **Alec Peck**, CA, CFO
- **J. Stephen Barley**, B.Com., LLB., Managing Director
- **A. Joe Fernandez**, VP Project Development

Technical Advisory Board

- **Brock Riedell**, Consulting Geologist
- **John A. Greig**, M.Sc., P.Geo.

Consulting Team

- **Independent Mining Consultants, Inc.**
- **Westland Resources, Inc.**
- **Milne & Associates**
- **KD Engineering / Metcon Research**
- **Call & Nicholas, Inc.**
- **Golder Associates Inc.**
- **JDS Energy & Mining Inc.**





Capital Structure

August 2, 2011		
Issued and Outstanding Shares	138,452,287	
Underwriter's Compensation Options	1,733,355	<i>at \$1.00 expiring December 21, 2012</i>
Options Outstanding	8,060,000	
Warrants Outstanding		
	3,433,750	<i>at \$0.23 expiring December 22, 2011</i>
	5,123,572	<i>at \$0.50 expiring April 30, 2012</i>
	14,200,175	<i>at \$1.00 expiring December 21, 2012</i>
Fully Diluted	171,003,139	



Redhawk Resources, Inc.

DISCLAIMER

- Actual results or events may differ materially from those anticipated. Users of this presentation are cautioned not to put undue reliance on forward-looking statements due to the inherent uncertainty therein. Redhawk Resources, Inc. disclaims any intent or obligation to update any forward-looking statements, whether as a result of new information, future events or results or otherwise.
- The information and materials contained in this presentation are provided “as is” without any express or implied warranty of any kind. In no event shall Redhawk Resources, Inc. be liable for damages whatsoever (including, without limitation, damages due to loss of Profits) or due to the use of the materials.

August 2011